



**SALES**

**SERVICE**

**CALIBRATION**

## MINI POCKET MULTIMETER

- Pocket-sized, auto-ranging digital multimeter
- Measures AC/DC voltage and current, resistance, frequency, capacitance and duty cycle
- Diode test and continuity check functions
- Cat. II, 600V safety rating
- Includes test leads, battery and carrying case

### Specifications

DC Voltage Range: 400mV, 4, 40, 400, 600V

AC Voltage Range: 4, 40, 400, 600V

AC/DC Current Range: 400, 4000 $\mu$ A, 40, 400mA

Resistance Range: 400 $\Omega$ , 4, 40, 400k $\Omega$ , 4, 40M $\Omega$

Frequency Range: 99.9Hz, 0.999, 9.99, 99.9kHz

Capacitance Range: 4.000, 40.00, 400.0nF, 4.000, 40.00, 100 $\mu$ F



MODEL	DESCRIPTION	PRICE
R5006	Mini Pocket Multimeter	\$49

## POCKET MULTIMETER + NCV

- Auto-ranging multimeter & non-contact voltage detector
- Built-in flashlight
- Diode check and continuity test
- Cat. III, 1000V safety rating
- Includes test leads and batteries

### Specifications

AC Voltage Range: 2.000, 20.00, 200.0, 600V

DC Voltage Range: 200mV, 2.000, 20.00, 200.0, 600V

AC/DC Current Range: 200.0, 2000 $\mu$ A, 20.00, 200mA

Resistance Range: 200.0 $\Omega$ , 2.000, 20.00,  
200.0k $\Omega$ , 2.000, 20.00M $\Omega$



MODEL	DESCRIPTION	PRICE
ST-118	Pocket Multimeter + NCV	\$49
CA-05A	Soft Carrying Case	\$19

## TRMS WATERPROOF DIGITAL MULTIMETER

- True RMS AC/DC voltage and current measurements
- Measures frequency, capacitance and temperature
- 4-20 mA process loop measurements with % readout
- Data hold, Max/Min recording mode
- IP67 Rated (Dust and Waterproof)
- Cat. IV, 600V & Cat. III, 1000V safety ratings
- Includes temperature input adapter, Type K thermocouple wire probe, test leads, battery and carrying case

### Specifications

AC/DC Voltage Range: 1000V

AC/DC Current Range: 10A

Resistance Range: 40M $\Omega$

Frequency Range: 10MHz

Capacitance Range: 40mF

Duty Cycle Range: 99.9%

Temperature Range: 1400°F (760°C)



MODEL	DESCRIPTION	PRICE
R5010	True RMS Waterproof Digital Multimeter	\$159
FC-300	Fused Test Lead Set	\$39

## AUTORANGING MULTIMETER

- Auto ranging AC/DC digital multimeter with temperature function
- Diode check and continuity test
- Data hold function
- Double molded plastic housing
- Cat. III, 600V safety rating
- Includes temperature input adapter, type K thermocouple wire probe, test leads, battery and carrying case

### Specifications

AC/DC Voltage Range.: 600V  
 AC/DC Current Range: 10A  
 Resistance Range: 40M $\Omega$   
 Frequency Range: 10MHz  
 Capacitance Range: 200 $\mu$ F  
 Duty Cycle Range: 99.9%  
 Temperature Range: 1400 $^{\circ}$ F (760 $^{\circ}$ C)



MODEL	DESCRIPTION	PRICE
R5008	Autoranging Multimeter	\$79
FC-300	Fused Test Lead Set	\$39

## TRMS AUTORANGING MULTIMETER + NCV

- Measures AC/DC voltage and current, resistance, frequency ratio, variable frequency voltage (VFC) capacitance and temperature
- True RMS AC voltage and current measurements
- Also capable of detecting non-contact AC voltage and current measurements (with optional clamp-on adapter)
- Diode test and continuity check functions
- Max/Min, Data hold and Relative modes
- Auto and manual ranging
- Cat. III, 600V safety rating
- Includes test leads, type K thermocouple probe and batteries

### Specifications

AC/DC Voltage Range: 60.00, 600.0mV, 6.000, 60.00, 600.0V, 600V  
 AC/DC Current Range: 600.0, 6000 $\mu$ A, 60.0, 600.0mA, 6.000, 10.00A  
 Resistance Range: 600.0 $\Omega$ , 6.000, 60.00, 600.0k $\Omega$ , 6.000, 60.00M $\Omega$   
 Capacitance Range: 9.999nF, 99.99nF to 999.9 $\mu$ F, 9.999 to 99.99mF  
 VFC Range: 200.0 to 600V  
 Frequency Range: 9.999Hz to 9.999MHz  
 Temperature Range: -40 to 1832 $^{\circ}$ F (-40 to 1000 $^{\circ}$ C)  
 Duty Cycle: 0.1 to 99.9%  
 Diode Test: Around 3V



MODEL	DESCRIPTION	PRICE
R5007	TRMS Autoranging Multimeter + NCV	\$109
R5900	Magnetic Hanging Strap	\$24
FC-300	Fused Test Lead Set	\$39

## TRMS BLUETOOTH/WATERPROOF MULTIMETER

- AC and DC voltage and current, resistance, capacitance, frequency and duty cycle measurements
- 10MHz frequency counter
- Temperature measurement capability
- True RMS AC voltage and current measurements
- Min/Max/Avg and Peak hold (>1ms) functions
- Store up to 10,000 recorded events
- Log multiple sessions or log data continuously for over 200 hours
- Bluetooth interface
- IP67 Rated (Dust and Waterproof)
- Includes test leads, Type K temperature probe, rechargeable battery and software

### Specifications

AC/DC Voltage Range: 50, 500mV, 5, 50, 500, 1000V

AC/DC Current Range: 500, 5000 $\mu$ A, 50, 500mA, 10A

Resistance Range: 50, 500 $\Omega$ , 5, 50, 500k $\Omega$ , 5, 50M $\Omega$

Capacitance Range: 5, 50, 500nF, 5, 50, 500 $\mu$ F, 10mF

Frequency Range: 50, 500Hz, 5, 50, 500kHz, 5, 10MHz

Temperature Range: -58 to 1832 $^{\circ}$ F (-50 to 1000 $^{\circ}$ C)



MODEL	DESCRIPTION	PRICE
R5005	True RMS Multimeter	\$369
FC-300	Fused Test Lead Set	\$39

## AC CURRENT ADAPTER

- Ideal tool to extend the current range for all multimeters
- Voltage output of 1 mV/A via standard banana inputs

### Specifications

AC Current Range: 200A



MODEL	DESCRIPTION	PRICE
CP-09	AC Current Adapter	\$59

## AC/DC CURRENT ADAPTER

- Converts any digital multimeter into an AC/DC current clamp

### Specifications

AC/DC Current Range: 200A, 2000A



MODEL	DESCRIPTION	PRICE
CA-203	AC/DC Current Adapter	\$129

## AC CLAMP METER, 400A

- Measures AC current, AC and DC voltage, resistance, capacitance, as well as temperature with the included Type K thermocouple probe
- Diode test and continuity check
- Cat. III, 600V safety rating
- Includes test leads, temperature probe, batteries and carrying case

### Specifications

AC Current Range: 40.00, 400.0 A

DC Voltage Range: 400.0mV, 4.000, 40.00, 400.0, 600.0V

AC Voltage Range: 4.000, 40.00, 400.0, 600.0V

Resistance Range: 400.0Ω, 4.000, 40.00, 400.0kΩ, 4.000, 40.00MΩ

Capacitance Range: 40.00, 400.0nF, 4.000, 40.00, 100.0μF

Temperature Range: -4.0 to 1400.0°F (-20.0 to 760.0°C)



MODEL	DESCRIPTION	PRICE
R5020	AC Clamp Meter, 400A	\$99
FC-300	Fused Test Lead Set	\$39

## TRMS AC/DC CLAMP METER + NCV, 500A

- Measures AC/DC current, AC/DC voltage, resistance, capacitance, frequency, duty cycle & temperature with a type K thermocouple probe
- Non-contact AC voltage detector in clamp tip
- Max/Min, Data hold and Relative functions
- Cat. III, 600V safety rating
- Includes test leads, temperature probe, batteries and carrying case

### Specifications

AC/DC Current Range: 50.00, 500.0A

AC Voltage Range: 500.00mV, 5.0000, 50.000, 500.00, 750.0V

DC Voltage Range: 500.00mV, 5.0000, 50.000, 500.00, 1000.0V

Resistance Range: 500.00Ω, 5.000, 50.000, 500.00kΩ, 5.0000, 50.000MΩ

Frequency Range: 10.000kHz

Capacitance Range: 500.00, 5000.0nF, 50.00, 500.0μF, 5.000mF

Temperature Range: 148.0 to 1832.0°F (-100.0 to 1000.0°C)



MODEL	DESCRIPTION	PRICE
R5030	TRMS AC/DC Clamp Meter + NCV, 500A	\$229
FC-300	Fused Test Lead Set	\$39

## TRMS AC/DC CLAMP METER, 1000A

- Measures AC and DC voltage and current, resistance, capacitance and frequency as well as temperature with the included type K thermocouple probe
- Diode and continuity test with beeper
- Max/Min and Relative (zero) functions
- Cat. III, 600V safety rating
- Includes test leads, temperature probe, battery and carrying case

### Specifications

AC/DC Current Range: 500.00, 1000.0A

AC Voltage Range: 500.00mV, 5.000, 50.00, 500.0, 750.0V

DC Voltage Range: 500.00mV, 5.000, 50.00, 500.0, 1000.0V

Resistance Range: 500.00Ω, 5.000, 50.00, 500.0kΩ, 5.000, 50.00MΩ

Capacitance Range: 500.00, 5000.0nF, 50.00, 500.0μF, 5.000mF

Frequency Range: 10.000kHz

Temperature Range: -148.0 to 1832.0°F (-100.0 to 1000.0°C)



MODEL	DESCRIPTION	PRICE
R5040	TRMS AC/DC Clamp Meter, 1000A	\$229
FC-300	Fused Test Lead Set	\$39

## TRMS AC/DC CLAMP METER, 1000A

- Max/Min and Data Hold functions
- Peak Hold function
- Diode and continuity test with beeper
- Auto or manual ranging
- Cat. II, 1000V & Cat. III, 600V safety ratings
- Includes test leads, battery and carrying case

### Specifications

Current Range: 40A, 400A, 1000A AC/DC  
 Voltage Range: AC: 400V, 750V; DC: 400V, 1000V  
 Resistance Range: 400 $\Omega$ , 4000 $\Omega$   
 Frequency Range: A & V: 4kHz, 10kHz



MODEL	DESCRIPTION	PRICE
R5050	TRMS AC/DC Clamp Meter, 1000A	\$289
FC-300	Fused Test Lead Set	\$39

## TRMS AC/DC CLAMP METER, 2000A

- Full function autoranging digital multimeter includes AC/DC voltage, current, resistance, capacitance, frequency, duty cycle, diode and continuity
- DC current push button zero, relative measurements and data hold
- Cat. III, 1000V safety rating
- Includes test leads and battery

### Specifications

AC/DC Current Range: 400A, 2000A  
 AC/DC Voltage Range: 4V, 40V, 400V, 1000V  
 DC Voltage Range: 400mV  
 Resistance Range: 400 $\Omega$ , 4k $\Omega$ , 40k $\Omega$ , 400k $\Omega$ , 4M $\Omega$ , 40M $\Omega$   
 Frequency Range: 5Hz, 50Hz, 500Hz, 5kHz, 50kHz, 100kHz  
 Capacitance Range: 50nF, 500nF, 5 $\mu$ F, 50 $\mu$ F



MODEL	DESCRIPTION	PRICE
CM-9930	TRMS AC/DC Clamp Meter, 2000A	\$249
FC-300	Fused Test Lead Set	\$39
CA-05A	Soft Carrying Case	\$19

## EARTH RESISTANCE CLAMP METER

- Resolution of 0.001 $\Omega$  for low resistance measurements
- Stores up to 99 resistance measurements
- Measures leakage current to 1mA and neutral current to 20A
- Includes 3 resistance calibration loops (1 $\Omega$ , 5 $\Omega$  and 10 $\Omega$ ), batteries and hard carrying case

### Specifications

Resistance Range: 0.01-0.999 $\Omega$ , 1-9.99 $\Omega$ , 10-99.9 $\Omega$ ,  
 100-199.9 $\Omega$ , 200-400 $\Omega$ , 400-600 $\Omega$ , 600-1200 $\Omega$   
 Current Range: 100mA, 300mA, 1A, 3A, 10A, 20A



MODEL	DESCRIPTION	PRICE
MS2301	Earth Resistance Clamp Meter	\$1595

## AC LEAKAGE CURRENT TESTER

- 10 $\mu$ A resolution
- Max/Min and Data hold
- Overload protection
- Includes test leads, batteries and soft carrying case

### Specifications

Current Range: 40mA to 100A AC

Voltage Range: 400 VAC

Resistance Range: 40 to 400 $\Omega$

Continuity Test: 40 $\Omega$  threshold, beeper at 2.5kHz



MODEL	DESCRIPTION	PRICE
ST-9809	AC Leakage Current Tester	\$149
FC-300	Fused Test Lead Set	\$39

## INSULATION TESTER

- Test voltage combinations: 250V, 500V or 1000V
- 1mA test current for M $\Omega$  range at rated voltage
- 200mA test current for continuity range
- Continuity test with beeper
- Data hold switch
- Test button may be locked on for hands-free operation
- Cat. III, 1000V safety rating
- Includes test leads, batteries and hard carrying case

### Specifications

Test Voltages: 250V, 500V, 1000V

Insulation Resistance Range: 200M $\Omega$ , 2000M $\Omega$

Resistance Range: 200 $\Omega$ , 2000 $\Omega$

Voltage Range: 750VAC; 1000VDC

Continuity Range: Beeps  $\leq$ 40 $\Omega$

Test Current:  $\leq$ 200mA



MODEL	DESCRIPTION	PRICE
ST-5500	Insulation Tester	\$249
FC-300	Fused Test Lead Set	\$39

## INSULATION TESTER

- Wide range measurements from 500V to 5000V and up to 60G $\Omega$
- Sources up to 1.2mA current during tests to offset capacitance load
- Polarization index measurement (PI)
- Dielectric absorption ratio measurements (DAR)
- Max/Min, Peak, Relative value and Data Hold functions
- Cat. IV, 600V safety rating
- Includes test leads, batteries and carrying case

### Specifications

*Insulation Resistance*

Test Voltages: 500V, 1000V, 2500V, 5000V DC

Measurement Range: 0 to 60.0G $\Omega$

*Resistance Tests*

Measurement Range: 0.1 to 6000 $\Omega$

*Voltage Tests*

Measurement Range: 0.5 to 600.0V AC/DC



MODEL	DESCRIPTION	PRICE
R5002	Insulation Tester	\$995

## 3-PHASE & MOTOR ROTATION TESTER

- Tests phase orientation of 3-phase power sources
- Indicates phase orientation (clockwise or counter-clockwise and whether each of the three phases is live)
- Easy to open alligator clips with wide jaws
- Cat. III, 600V safety rating
- Includes cables with 3 color-coded alligator clips, battery and carrying case



### Specifications

Input Voltage: 40 to 600 VAC

Operating Frequency: 2 to 400 Hz

MODEL	DESCRIPTION	PRICE
R5004	3-phase & Motor Rotation Tester	\$119

## DUAL INPUT TRMS AC VOLTAGE/CURRENT DATA LOGGER

- Simultaneously measure 2 True RMS AC voltage inputs OR 2 AC current inputs OR 1 AC voltage and 1 AC current input
- User programmable sample rates from 1 second to 24 hours
- Stores up to 256,000 measurements
- User programmable high/low alarms
- LCD indicates time/date, current readings, Max/Min, Peak hold and whether alarm settings have been exceeded
- Download collected data through USB interface
- Includes AC current clamp sensor and voltage sensor, USB cable, software and battery



### Specifications

AC Current Range: 10 to 200A

Accuracy:  $\pm(2\% \text{ rdg. } \pm 1A)$

AC Voltage Range: 10 to 600V

Accuracy:  $\pm(2\% \text{ rdg. } \pm 1V)$

MODEL	DESCRIPTION	PRICE
R5003	Dual Input TRMS AC Voltage/Current Data Logger	\$389

## WATT METER

- Digital multimeter and watt meter in a single compact unit
- Measures AC and DC volts and current and watts
- Measures true power up to 6000 watts
- Manual zero adjust in watt meter mode; automatic zero adjust in multimeter mode
- Includes test leads and battery



MODEL	DESCRIPTION	PRICE
DW-6060	Watt Meter	\$269
FC-300	Fused Test Lead Set	\$39
CA-05A	Soft Carrying Case	\$19



## DECADE BOXES

- 3 binding posts permit isolated substitutions
- Slide switches allow user to simply add or subtract for desired value
- Excellent for circuit development

### Specifications

#### CBOX-406

Range: 100 pF to 11,111  $\mu$ F, 5 ranges

Resolution: CBOX-406: 100 pF per step

Accuracy:  $\pm 1\%$  of reading

#### RBOX-408

Range: 1 to 11,111,110 $\Omega$ , 7 ranges

Resolution: RBOX-408: 1 $\Omega$  increments

Accuracy:  $\pm 1\%$  of reading



MODEL	DESCRIPTION	PRICE
CBOX-406	Capacitance Decade Box	\$179
RBOX-408	Resistance Decade Box	\$139

## MILLIOHMETER

- 4 terminal input for high accuracy of low resistance
- Measuring Range: 0.1m $\Omega$  to 2000 $\Omega$ , 5 ranges
- Large LCD display
- LSI circuitry provides high accuracy, reliability and durability
- Zero adjustment
- Built-in overload protection
- Includes 4-wire with 2 Kelvin clips



MODEL	DESCRIPTION	PRICE
K5090	Milliohmmeter, 110V	\$469
K5090-230V	Milliohmmeter, 230V	\$469

## LCR METER

- Measure inductance/capacitance/resistance with secondary parameters including dissipation factor (D), quality factor (Q), phase angle ( $\theta$ ), equivalent series/parallel resistance (ESR or Rp)
- Autoranging operation for AC impedance and DE resistance measurement
- Auto LCR smart check and measurement
- Series/Parallel modes
- Ls/Lp/Cp with D/Q/ $\theta$ /ESR parameters
- Support DCR mode 200 to 200M $\Omega$
- High accuracy with 4 or 5 terminal Kelvin measurement
- Testing frequency is up to 10kHz and output frequency is up to 100kHz
- IP67 Rated (Dust and Waterproof)
- Includes test leads and batteries

### Specifications

#### Inductance (F=1kHz)

Range: 2000.0 $\mu$ H/20.000/200.0/2000.0mH/20.000/200.00/2000.0H

#### Capacitance (F=1kHz)

Range: 2000.0pF/20.000/200.00/2000.0nF/20.00/200.00/2000 $\mu$ F

#### Resistance (F=1kHz)

Range: 20.000/200.00 $\Omega$ /2.0000/20.000/200.00k $\Omega$ /2.0000/20.000/200.0M $\Omega$

Test Frequencies: 100/120/1k/10k/100k Hz



MODEL	DESCRIPTION	PRICE
R5001	LCR Meter	\$295

## VOLTAGE/CURRENT CALIBRATOR

- Measure and calibrate current signals
- Provides a precise current and DC mV source
- Able to power or measure a 2-wire current loop
- Drives loads up to 500Ω
- LCD display with a maximum of 1999 counts
- Includes test leads and battery

### Specifications

#### Source & Measurement

Current Range: 0 to 19.99mA; 0 to 24mA

Resolution: 0.01mA; 0.1mA

Accuracy:  $\pm(0.25\% \text{ f.s.} + 1 \text{ dgt.})$ ;  $\pm(0.5\% \text{ f.s.} + 1 \text{ dgt.})$

#### DC mV Source

Voltage Range: -199.9mV to +199.9mV

Resolution: 0.1mV

Accuracy:  $\pm(0.25\% \text{ f.s.} + 1 \text{ dgt.})$



MODEL	DESCRIPTION	PRICE
R8800	Voltage/Current Calibrator	\$179
CA-05A	Soft Carrying Case	\$19

## VOLTAGE/CURRENT CALIBRATOR

- Measure loop current (0-22 mA) signals with very high accuracy of 0.03% and 0.001 mA resolution
- Measure voltage output process signals from PLCs, transmitters
- Source or simulate 22 mA loop current
- Source voltage to 20V
- 24V loop supply with simultaneous current measurement
- Ramp output function
- USB computer interface
- Includes test leads, USB cable and software, battery and carrying case

### Specifications

#### Source & Measurement

Current Range: 0 to 22mA

Resolution: 0.001mA

Accuracy:  $\pm(0.03\% \text{ f.s.} + 2 \text{ dgt.})$

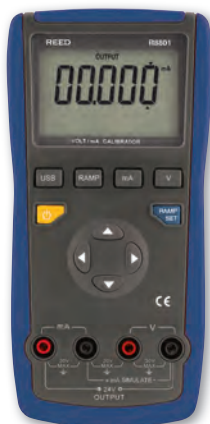
Voltage Range: 0 to 20V

Resolution: 0.001V

Accuracy:  $\pm(0.03\% \text{ f.s.} + 2 \text{ dgt.})$

Loop Power Supply: 24VDC

Accuracy:  $\pm 10\%$



MODEL	DESCRIPTION	PRICE
R8801	Voltage/Current Calibrator	\$595

We are proud to offer our customers quality products at economical prices.



**WE BACK UP ALL OUR PRODUCTS WITH A STANDARD 1 YEAR WARRANTY.**

## VOLTAGE/CURRENT SIMULATOR

- Sources voltage and current
- Automatic calibration
- User selectable auto power-off
- Selectable step or ramp outputs
- Includes test leads, alligator clips, protective holster, carrying case and battery

### Specifications

DC Voltage Range: 10V

Output Range: 0.00 to 11.000V

Accuracy:  $\pm 0.05\%$  setting

DC Current Range: 20mA

Output Range: 0.000 to 22.000mA

Accuracy:  $\pm 0.05\%$  setting +  $4\mu\text{A}$

Analog Transducer: -20mA

Output Range: 0.000 to -22.000mA

Accuracy:  $\pm 0.05\%$  setting +  $4\mu\text{A}$

Loop Power: 24V

Accuracy:  $\pm 10\%$



MODEL	DESCRIPTION	PRICE
VC04	Voltage/Current Simulator	\$449

## LOOP CALIBRATOR

- mA sourcing, simulation and measurement
- 0-28 VDC measurement to check loop voltage
- Simulate mA and % of span display
- 24V loop power supply
- 0.02% accuracy and 0.001% of span display
- Selectable step or ramp outputs
- Includes test leads, alligator clips, protective holster, soft carrying case and battery

### Specifications

#### Measurement Function

DC Voltage Range: 28V

Output Range: -0.200 to 28.000V

Accuracy:  $\pm 0.02\%$  reading  $\pm 2\text{mV}$

DC Current Range: 20mA

Output Range: -1.000 to 22.000mA

Accuracy:  $\pm 0.02\%$  reading +  $4\mu\text{A}$

Loop Current Range: 20mA

Output Range: 0.000 to 22.000mA

Accuracy:  $\pm 0.02\%$  reading +  $4\mu\text{A}$

#### Output Function

Current Range: 20mA

Output Range: 0.000 to 22.000mA

Accuracy:  $\pm 0.05\%$  setting +  $4\mu\text{A}$

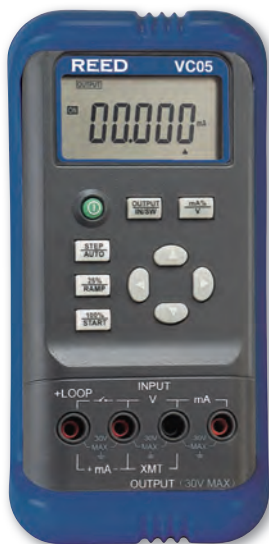
Analog Transducer: -20mA

Output Range: 0.000 to -22.000mA

Accuracy:  $\pm 0.05\%$  setting +  $4\mu\text{A}$

Loop Power: 24V

Accuracy:  $\pm 10\%$



MODEL	DESCRIPTION	PRICE
VC05	Loop Calibrator	\$449

## MULTIMETER COMBO KIT

Includes the following:

- REED R5008 Autoranging Multimeter
- REED R5040 TRMS AC/DC Clamp Meter, 1000A
- REED R5100 AC Voltage Detector with Flashlight
- REED AC-006 AC Line Splitter
- REED TL-88-1 Safety Test Leads
- REED TP-01 Type K Thermocouple Wire Probe
- REED AD-1 Temperature Input Adapter
- REED C-833R Multi-tool Carrying Case



MODEL	DESCRIPTION	PRICE
ST-MULTIKIT	Multimeter Combo Kit	\$308

## ELECTRICIAN'S COMBO KIT

Includes the following:

- REED R5020 AC Clamp Meter, 400A
- REED R5008 Autoranging Multimeter
- REED R5100 AC Voltage Detector with Flashlight
- REED AD-1 Temperature Input Adapter
- REED TL-88-1 Safety Test Leads
- REED TP-01 Type K Thermocouple Wire Probe
- REED C-833R Multi-tool Carrying Case



MODEL	DESCRIPTION	PRICE
ST-ELECTRICKIT	Electrician's Combo Kit	\$196

## ELECTRICIAN'S COMBO KIT

Includes the following:

- REED R5010 True RMS Waterproof Digital Multimeter
- REED AD-1 Temperature Input Adapter
- REED TP-01 Type K Thermocouple Wire Probe
- REED TL-88-1 Safety Test Leads
- REED CP-09 AC Current Adapter
- REED AC-006 AC Line Splitter
- REED C-833R Multi-tool Carrying Case



MODEL	DESCRIPTION	PRICE
ST-ELECTRICKIT2	Electrician's Combo Kit	\$241

## INDUSTRIAL COMBO KIT

Includes the following:

- REED R5010 True RMS Waterproof Digital Multimeter
- REED R5020 AC Clamp Meter, 400A
- REED R5100 AC Voltage Detector with Flashlight
- REED TL-88-1 Safety Test Leads
- REED TP-01 Type K Thermocouple Wire Probe
- REED AD-1 Temperature Input Adapter
- REED C-833R Multi-tool Carrying Case



MODEL	DESCRIPTION	PRICE
ST-INDUSKIT	Industrial Combo Kit	\$277

## HVAC COMBO KIT

Includes the following:

- REED R5010 True RMS Waterproof Digital Multimeter
- REED R5030 TRMS AC/DC Clamp Meter + NCV, 500A
- REED R5100 AC Voltage Detector with Flashlight
- REED AD-1 Temperature Input Adapter
- REED TL-88-1 Safety Test Leads
- REED TP-01 Type K Thermocouple Wire Probe
- REED C-833R Multi-tool Carrying Case



MODEL	DESCRIPTION	PRICE
ST-HVACKIT	HVAC Combo Kit	\$367

## ELECTRICAL COMBO KIT

Includes the following:

- REED R2100 Thermal Imaging Camera, 160x120
- REED LM-8000 Environmental Meter
- REED R5010 True RMS Waterproof Digital Multimeter
- REED CP-09 AC Current Adapter
- REED AC-006 AC Line Splitter



MODEL	DESCRIPTION	PRICE
REED-ELECTRICAL-KIT	Electrical Combo Kit	\$3968

## INDUSTRIAL TEST LEADS

### Model FC-108:

- ø4mm, 100cm long safety test leads (one black, one red)
- Right angle sheathed banana plug to straight sheathed banana plug

To be used in conjunction with FC-108:

### Model FC-A23:

- Safety alligator clips

### Model CF-734760:

- Push-on safety test clips with insulated, nickel-plated jaws for gripping objects up to 3/8"

### Model FC-105:

- Tips include banana-style spring contacts with nickel-plated brass ends

### Model FC-105A:

- Push-on safety test probes with stainless steel tips

### Model FC-170A:

- Industrial test probes with stainless steel tips

### Model FC-178A:

- Safety jaw clips

### Model FC-A18:

- Tapered tips for probing electronic components or boards



MODEL	DESCRIPTION	PRICE
FC-108	Safety Test Leads	\$16
FC-A23	Safety Alligator Clips	\$20
CF-734760	Safety Test Clips	\$37
FC-105	Basic Test Probes	\$10
FC-105A	Safety Test Probes	\$10
FC-170A	Safety Test Probes	\$16
FC-178A	Safety Jaw Clips	\$16
FC-A18	Electronic Test Probes	\$4

## INDUSTRIAL TEST LEADS

### Model TL-88-1 Safety Test Leads

- Set of two 48" long leads, one black and one red
- Flexible silicone insulated safety test leads are heat and cold resistant
- Distinctive comfort grip test probes with stainless steel tips

### Model FC-A15 Safety Alligator Clips

- Slide-on style for test probes
- Jaws open to 8mm

### Model TL-88-A15 Safety Test Leads

- Same as above with FC-A15 alligator clips

### Model FC-300 Fused Test Leads

- Fused test lead set
- Lead length: 1.4 meters
- Compatible with all instruments that accept standard 4mm shrouded banana connectors

### Model P-15

### Weatherproof Plug



FC-300-0.2A/250V



MODEL	DESCRIPTION	PRICE
TL-88-1	Safety Test Leads	\$16
FC-A15	Safety Alligator Clips	\$4
TL-88-A15	Safety Test Leads w/ Alligator Clips	\$19
FC-300	Fused Test Leads	\$39
FC-300-0.2A/250V	Replacement Fuses	\$5
P-15	Weatherproof Plugs	\$5

## INDUSTRIAL TEST LEAD KITS

### Model FC-108G Safety Test Leads Kit

- FC-108 safety test leads
- FC-A23 alligator clips
- FC-105A test probes
- CA-52A carrying case

### Model FC-A23G

#### Deluxe Safety Test Leads Kit

- TL-88-1 safety test leads
- FC-108 safety test leads
- FC-A15 alligator clips
- FC-A23 alligator clips
- FC-A18 electronic test probes
- FC-105 test probes
- FC-105A test probes
- FC-170A industrial test probes
- FC-178A safety jaw clips
- CF-734760 test clips
- CA-05A carrying case



MODEL	DESCRIPTION	PRICE
FC-108G	Safety Test Lead Kit	\$50
FC-A23G	Deluxe Safety Test Lead Kit	\$143

## AC LINE SPLITTER

- Enables clamp meter user to measure AC current on a 2-wire or 3-wire power cord to 15A
- Plugging the power connector into the line splitter separates the hot/ live conductor from the neutral and ground
- Provides safe measurements of current without the need to cut off the plug and separate the conductors
- Voltage check function



MODEL	DESCRIPTION	PRICE
AC-006	AC Line Splitter	\$15

## TEMPERATURE INPUT ADAPTER

- Converts a type K probe with a mini connector to standard 3/4" banana jacks



MODEL	DESCRIPTION	PRICE
AD-1	Temperature Input Adapter	\$12

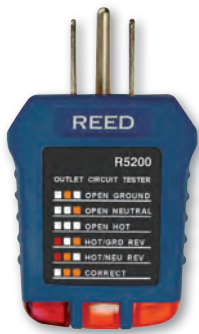


## OUTLET CIRCUIT TESTER

- Verifies that the outlet can provide power to a device
- Tests whether the outlet is properly wired
- Performs the entire array of tests by simply plugging the device into the outlet once and observing the state of the lights
- Easy to read light pattern chart is printed on tester, enabling the user to quickly match the results to the corresponding wiring problem

### Specifications:

Rated Working Voltage: 110 to 125 VAC



MODEL	DESCRIPTION	PRICE
R5200	Outlet Circuit Tester	\$12

## AC VOLTAGE DETECTOR WITH FLASHLIGHT

- Detects the presence of AC voltage without contact
- Signals the presence of voltage with an LED light and audible buzzer
- Built-in flashlight
- Double insulated housing for increased safety
- Cat. III, 1000V & Cat. IV, 600V safety ratings
- Includes batteries

### Specifications:

AC Voltage Range: 90 to 1000V

Max. Working Current: 32mA



MODEL	DESCRIPTION	PRICE
R5100	AC Voltage Detector with Flashlight	\$25



# REED

## R5007 TRMS AUTORANGING MULTIMETER

available with optional

## R5900 MAGNETIC HANGER





## INFRARED THERMOMETER, 8:1, 536°F (280°C)

- Safely measure surface temperatures of hot, hazardous or hard-to-reach objects without contact
- Built-in laser pointer identifies target area
- Fixed emissivity covers 90% of applications
- Display backlight
- Includes battery

### Specifications

Temperature Range: -58 to 536°F (-50 to 280°C)

Resolution: 0.1°F (0.1°C)

Accuracy: ±2% of reading or 4°F (2°C)

Distance to Spot Ratio: 8:1

Emissivity: Fixed at 0.95

Spectral Response: 8 to 14µm



MODEL	DESCRIPTION	PRICE
R2001	IR Thermometer, 8:1, 536°F (280°C)	\$59

## COMPACT INFRARED THERMOMETER, 8:1, 932°F (500°C)

- Precise non-contact temperature measurements
- Built-in laser pointer identifies target area
- Fixed emissivity covers 90% of all applications
- Automatic ambient temperature compensation
- Max/Min temperature display
- Trigger lock
- Includes battery and carrying case

### Specifications

Temperature Range: -58 to 932°F (-50 to 500°C)

Resolution: 0.1°F (0.1°C)

Accuracy: ±2% of reading or 4°F (2°C)

Distance to Spot Ratio: 8:1

Emissivity: Fixed at 0.95

Spectral Response: 6 to 14µm



MODEL	DESCRIPTION	PRICE
R2002	Compact IR Thermometer, 8:1, 932°F (500°C)	\$89

## INFRARED THERMOMETER 30:1, 2498°F (1370°C), TYPE K T/C

- IR thermometer with Type K thermocouple input
- Adjustable emissivity from 0.10 to 1.0
- High and low alarms
- Max, Min, Avg, Diff record
- 20 data points of memory
- Trigger lock
- Includes Type K T/C probe, battery and carrying case

### Specifications

Type K Temp. Range: -58.0 to 2498°F (-50.0 to 1370°C)

IR Temp. Range: -58.0 to 1922.0°F (-50.0 to 1050.0°C)

Distance to Spot Ratio: 30:1

Emissivity: Adjustable from 0.10 to 1.0

Spectral Response: 8 to 14µm



MODEL	DESCRIPTION	PRICE
R2005	IR Thermometer 30:1, 2498°F (1370°C)	\$189

## INFRARED THERMOMETER, 50:1, 1832°F (1000°C)

- Built-in laser pointer identifies target area
- Adjustable emissivity from 0.10 to 1.0
- High and low alarm setpoints
- Max, Min and Dif. Avg. temperature displays
- Large LCD with backlight and display hold
- Includes battery and carrying case

### Specifications

Temperature Range: -58.0 to 1832°F (-50.0 to 1000°C)

Accuracy: ±2% of reading

Distance to Spot Ratio: 50:1

Emissivity: Adjustable from 0.10 to 1.0



MODEL	DESCRIPTION	PRICE
ST-8839	IR Thermometer, 50:1, 1832°F (1000°C)	\$329

## FOOD SERVICE INFRARED THERMOMETER, 8:1, 329°F (200°C)

- Designed to meet food service industry requirements
- User settable alarm, with audible/visual signal if temperature is exceeded, assures food safety by maintaining optimal temperatures for the cooking, serving and storing of food products
- Fixed emissivity covers 90% of all applications
- Includes battery and carrying case

### Specifications

Temperature Range: -58 to 392°F (-50 to 200°C)

Resolution: 0.1°F (0.1°C)

Accuracy: +/-2% of reading or 4°F (2°C)

Distance to Spot Ratio: 8:1

Emissivity: Fixed at 0.95



MODEL	DESCRIPTION	PRICE
FS-200	Food Service IR Thermometer, 8:1, 329°F (200°C)	\$109

## VIDEO INFRARED THERMOMETER

- Dual lasers identify exact measuring spot where they converge
- Adjustable emissivity from 0.10 to 1.00
- Type K thermocouple input
- Air temperature, humidity, dew point and wet bulb temperature measurement
- 2.2" TFT color LCD and built-in 640 x 480 pixels camera
- Transmit images and videos via USB interface
- Datalogger capabilities with date and time
- Includes type K thermocouple probe, AC adapter, USB adapter, mini-tripod and hard carrying case

### Specifications

IR Temp. Range: -58 to 3992°F (-50 to 2200°C)

Distance to Spot Ratio: 50:1

Spectral Response: 8 to 14µm

Emissivity: Adjustable from 0.10 to 1.00

Type K Temp. Range: -58 to 2498°F (-50 to 1370°C)

Accuracy: ±0.5% or 0.9°F (±0.5°C)

Air Temp. Range: 32 to 122°F (0 to 50°C)

Dew Point & Wet Bulb Temp. Range: 32 to 122°F (0 to 50°C)

Humidity Range: 0 to 100% RH



MODEL	DESCRIPTION	PRICE
R2020	Video Infrared Thermometer	\$549

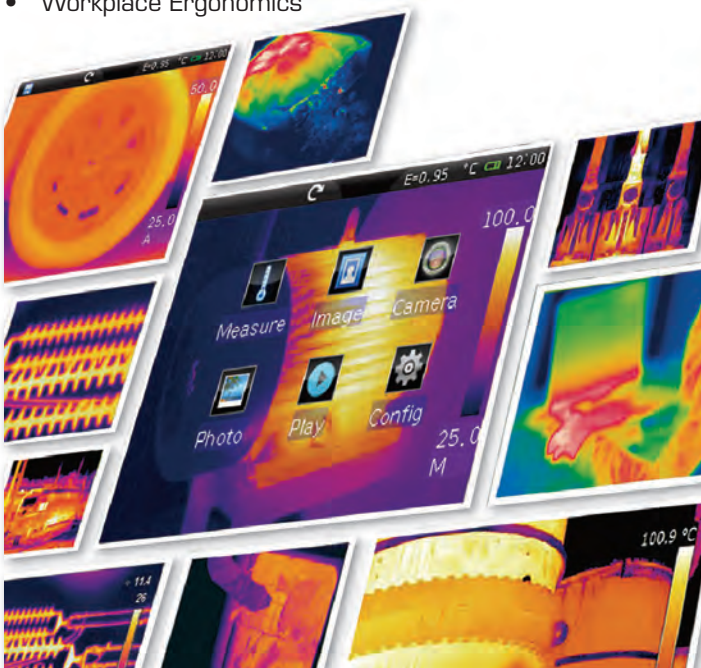
# REED

## THE THERMOGRAPHY SPECIALISTS

**THERMOGRAPHY** is an accurate and non-destructive method to assess the condition of industrial, mechanical and electrical equipment through temperature mapping.

### Some applications include:

- Plant/General Maintenance
- HVAC/R & Plumbing
- Transportation/Automotive
- Cooling and Reheating
- Serving areas
- Food Service Equipment
- Cold Storage
- Home & Building Inspection
- Electrical & Mechanical Inspection
- Predictive Maintenance
- Health & Safety
- Equine & Veterinary
- Road Construction
- Workplace Ergonomics





## THERMAL IMAGING CAMERA, 80x80

- Infrared resolution of 80 x 80 (6,400 pixels)
- High thermal sensitivity of 0.1°F (0.1°C)
- 2.8" color 240 x 320 pixel LCD display
- Built-in laser and white LED flashlight
- 5 Megapixel digital camera
- 32X continuous digital zoom
- Infrared and visual images and picture-in-picture with infrared overlay
- Automatic hot/cold spot indicator
- Automatic level/span function
- Automatic power off
- 4 infrared color palettes
- Video recording with voice annotations
- 8Gb micro SD memory card
- 7 languages
- 2m drop tested



### Specifications

IR Resolution: 80 x 80 (6,400 pixels)

Thermal Sensitivity / NETD:

< 0.1°F @ +86°F (+30°C) / 100 mK

Temperature Range: -4°F to +302°F (-20°C to +150°C);  
+32°F to +662°F (0°C to +350°C)

Accuracy: ±3.6°F (±2°C) or ±2% of reading

Spot: Center Spot

Built-in Digital Camera: 5 Megapixels

Display: 2.8" LCD, 240 x 320 pixels

Image Modes: IR image, Visual image, Picture-in-Picture

Storage Media: 8GB Micro SD Card

Video Output: HDMI

Drop Tested: 2m



MODEL	DESCRIPTION	PRICE
R2050	Thermal Imaging Camera, 80x80	\$1295
R2050-3.7V	Spare Battery	\$30

# THERMAL IMAGING CAMERA, 160x120

## High Resolution IR Images

19,200 pixels (160 x 120) Infrared resolution

## Visible Light Digital Camera

640x480 resolution with flash provides sharp images regardless of lighting conditions

## Picture in Picture

Displays thermal image super-imposed over a digital image

## LED Flashlight

Allows the visual camera and fusion to be used in poorly lit environments

## Wide Temperature Range

From -4 to 752°F (-20 to 400°C) targeting electrical and industrial applications

## ±3.6°F% (±2°C%) Accuracy

Reliable temperature measurement

## Thumbnail View

Easy to view and analyze images quickly

## Automatic Lens Recognition

Automatically identifies the temperature calibration data associated with each of the interchangeable lenses

## Audio Recorded with the Video Image

A speaker to listen to audio recorded with the video image

## Capacitive Touch Screen

More easy, productive and effective to operate

## Lithium Polymer Rechargeable Battery

Lasts >4hrs continuous use; replaceable

## Copy to USB

Easily uploads images from camera to USB memory card

## Area (Min/Max) Mode

Shows the Minimum or the Maximum Temperature reading in the selected area

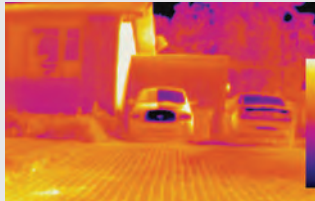


## RECOGNIZABLE LENSES

- Increase camera resolution at longer distances
- No camera calibration required

### Standard Lens (included)

29.8° 7.5mm Lens



D:S @ 50': 26.64 x 19.98'  
Resolution = 2" (51mm)

### RL-11 Replacement Lens

20.6° 11mm Lens



D:S @ 50': 18.16 x 13.62'  
Resolution = 1.36" (35mm)



## Specifications

- IR Resolution: 160 x 120 pixels
- Field of View: 29.8 x 22.6°
- Thermal Sensitivity (NETD): <math><0.08^{\circ}\text{C}</math> (80mK)
- Temperature Range: -4 to 752°F (-20 to 400°C)
- Accuracy:  $\pm 3.6^{\circ}\text{F}$  ( $\pm 2^{\circ}\text{C}$ ) or  $\pm 2\%$  of reading
- Screen Size: 3.5" color TFT LCD
- Focus: Manual
- Image Mode: Infrared, visual image, picture-in-picture visual image with infrared overlay
- Storage Media: 4GB micro SD card
- Drop Test: 2m

MODEL	DESCRIPTION	PRICE
R2100	Thermal Imaging Camera, 160x120	\$3995
RL-11	20.6° 11mm Replacement Lens	\$895
RL-22	10.4° 22mm Replacement Lens	\$1095
RL-33	6.9° 33mm Replacement Lens	\$1195
R2100-7.4V	Spare Battery	\$59



RL-22 Replacement Lens  
10.4° 22mm Lens



D:S @ 50': 9.12 x 6.84'  
Resolution = 0.68" (17mm)

RL-33 Replacement Lens  
6.9° 33mm Lens



D:S @ 50': 6.08 x 4.56'  
Resolution = 0.46" (12mm)



## HVAC COMBO KIT

Includes the following:

- REED R2100 Thermal Imaging Camera, 160x120
- REED R3002 Differential Pressure Manometer, 0 to 5psi
- REED R5100 AC Voltage Detector with Flashlight
- REED GD-3300 Combustible Gas Detector
- REED R6020 Temperature/Humidity Data Logger



MODEL	DESCRIPTION	PRICE
REED-HVAC-KIT	HVAC Combo Kit	\$3977

## GENERAL COMBO KIT

Includes the following:

- REED R2100 Thermal Imaging Camera, 160x120
- REED BS-150 Video Inspection Camera
- REED LM-8000 Environmental Meter



MODEL	DESCRIPTION	PRICE
R2100-KIT	General Combo Kit	\$3995

## BUILDING COMBO KIT

Includes the following:

- REED R2100 Thermal Imaging Camera, 160x120
- REED 8706 Digital Psychrometer
- REED ST-123 Pocket Size Moisture Meter
- REED R6010 Pinless Moisture Meter



MODEL	DESCRIPTION	PRICE
REED-BUILDING-KIT	Building Combo Kit	\$3963

## DIGITAL STEM THERMOMETER

- Stainless steel stem thermometer offers a quick response and laboratory accuracy
- Waterproof construction
- Easy to read LCD display
- Fahrenheit/Celsius switchable
- Display updates every 2 seconds
- Front panel calibration button
- Includes protective probe cover and battery



### Specifications

Temperature Range: -40 to 450°F (-40 to 230°C)

Resolution: 0.1°F (0.1°C)

Accuracy:  $\pm 1.0^\circ\text{F}$ : 0 to 230°F;  $\pm 3.6^\circ\text{F}$ :  $<0^\circ\text{F}$  &  $>230^\circ\text{F}$

MODEL	DESCRIPTION	PRICE
R2000	Digital Stem Thermometer	\$24

## DIGITAL STEM THERMOMETER

- Stainless steel stem thermometer offers a quick response and laboratory accuracy
- Easy to read LCD display
- Fahrenheit/Celsius switchable
- Display updates every 2 seconds
- Max/Min memory records highest and lowest temperatures
- Data Hold button lets you freeze a reading
- Auto power off
- Includes protective probe cover and battery



### Specifications

Temperature Range: -40 to 482°F (-40 to 250°C)

Resolution: 0.1°F (0.1°C)

Accuracy:  $\pm 1.5\%$  of reading  $\pm 2^\circ$

MODEL	DESCRIPTION	PRICE
R2222	Digital Stem Thermometer	\$22

## WATERPROOF RTD THERMOMETER

- Platinum resistor temperature sensor requires less temperature compensation than thermocouple units
- Selectable sensor types: Pt-100, Pt-500, Pt-1000 (4 wires)
- °F/°C switchable
- Min/Max/Avg functions
- Relative mode and Data hold
- Low battery indication with auto power off
- IP67 Rated (Dust and Waterproof)
- Includes piercing type temperature probe

### Specifications

Temperature Range: -148 to 572°F (-100 to 300°C)

Resolution: 0.1°F (0.1°C)

Accuracy:  $\pm 0.1\%$  reading  $+0.8^\circ\text{F}$  ( $+0.4^\circ\text{C}$ )

Temp. Coefficient:  $<18^\circ\text{C}$  &  $>28^\circ\text{C}$ :

0.01% reading  $+0.03^\circ\text{C}$



MODEL	DESCRIPTION	PRICE
C-370	Waterproof RTD Thermometer	\$229
TP-R01	Pt-100 Temperature Probe	\$99
CA-05A	Soft Carrying Case	\$19



## THERMOCOUPLE THERMOMETER

- Single input thermocouple thermometer designed for field use
- Large LCD display with backlight
- User selectable °C, °F or °Kelvin
- User selectable resolution of 0.1 or 1°F (0.1 or 1°C)
- Includes holster, TP-01 wire probe and battery
- Accepts K-type thermocouple probes (sold separately)
- Model **ST-610BDELUXE** includes: ST-610B Thermocouple Thermometer, LS-109 Surface Probe, LS-103 Air/Gas Probe, LS-107 General-purpose Probe and hard carrying case

### Specifications

Temperature Range: -58 to 2000°F (-50 to 1300°C)

Resolution: 0.1°F or 1°F (0.1°C or 1°C)

Accuracy: ±(0.5% of reading + 2°F (1°C))



MODEL	DESCRIPTION	PRICE
ST-610B	Thermocouple Thermometer	\$99
ST-610BDELUXE	Thermocouple Thermometer Kit	\$289
BS-6	Tripod	\$69

## 4-CHANNEL THERMOCOUPLE THERMOMETER, DATA LOGGER

- Measures & displays 4 separate temperatures simultaneously
- Calculates and displays temperature differentials (T1-T2)
- Accepts Type K, J, R, S, E, T thermocouples & Pt 100Ω RTD
- Data hold and Max/Min record
- Real time SD memory card datalogger with a built-in clock and calendar
- Sampling time set from 1 second to 3600 seconds
- No extra software needed, just plug the SD card (sold separately) into the computer and it downloads directly to Excel
- Easy to read LCD with backlight
- Auto power off or manual power off
- Model **SD-947DELUXE** includes: Thermocouple Thermometer, LS-109 Surface Probe, LS-103 Air/Gas Probe, LS-107 General-purpose Probe, LS-134A Needle Tip Probe and hard carrying case

### Specifications

Type K Temp. Range: -148.0 to 2372°F (-100.0 to 1300.0°C)

Type J Temp. Range: -148.0 to 2192°F (-100.0 to 1200.0°C)

Type T Temp. Range: -148.0 to 752.0°F (-100.0 to 400.0°C)

Type E Temp. Range: -148.0 to 999.9°F (-100.0 to 900.0°C)

Type R Temp. Range: 32 to 3092°F (0 to 1700°C)

Type S Temp. Range: 32 to 2732°F (0 to 1500°C)

RTD Temp. Range: -327.9 to 1562.0°F (-199.99 to 850.0°C)



MODEL	DESCRIPTION	PRICE
SD-947	4-Channel Thermocouple Thermometer, Data Logger	\$279
SD-947DELUXE	Thermocouple Thermometer Kit	\$516
SD-2GB	2GB SD Memory Card	\$29
TP-01	Type K Thermocouple Wire Probe	\$20
USB-01	USB Cable	\$79
SW-U801-WIN	Data Acquisition Software	\$89
BS-6	Tripod	\$69
CA-05A	Soft Carrying Case	\$19
AP-9VA-110V	AC Adapter	\$25

## THERMOCOUPLE PROBES - YELLOW

### Model LS-103 Air/Gas Probe

Specially designed to measure air or gases in heating & cooling units, ovens and engine exhausts. Maximum 1472°F (800°C).

### Model LS-104 Right Angle Surface Probe

Great for monitoring temperature inside pipes, flat surfaces, without keeping hands over heated area. Maximum 752°F (400°C).

### Model LS-107 General Purpose Probe

Used to measure both air or liquids, but is best recommended for immersion applications. Maximum 1292°F (700°C).

### Model LS-109 Surface Probe

Ribbon-style surface probe. Maximum 752°F (400°C).

### Model LS-134A Needle Tip Probe

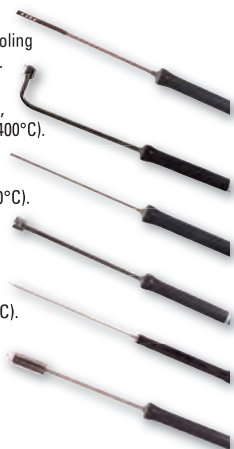
Medium gauge hypodermic needle tip, used to measure softer food stuffs, rubbers and solids. Max. 1472°F (800°C).

### Model LS-139 Surface Probe

Spring loaded probe is ideal for high temperature surface measuring requirements. Not recommended for use as an immersion probe. Maximum 932°F (500°C).

### Model TP-01 Type K Thermocouple Wire Probe

### Model LS-181 & LS-182 Thermocouple Connector



MODEL	DESCRIPTION	PRICE
LS-103	Air/Gas Probe	\$75
LS-104	Right Angle Surface Probe	\$89
LS-107	General Purpose Probe	\$75
LS-109	Surface Probe	\$75
LS-134A	Needle Tip Probe	\$69
LS-139	Surface Probe	\$89
TP-01	Type K Thermocouple Wire Probe	\$20
LS-181	Thermocouple Connector	\$5
LS-182	Thermocouple Connector	\$6

## THERMOCOUPLE PROBES - GREEN

### Model R2500 Air/Gas Probe

Specially designed to measure the temperature of air or gases. Thermocouple protected by perforated stainless steel shield. Max. 1652°F (900°C).

### Model R2501 Surface Probe

For flat or convex surface temperature measurements. Max. 932°F (500°C).

### Model R2502 Right Angle Surface Probe

For flat or convex surface temperature measurements. Right angle design allows temperature of hard to reach areas to be taken. Max. 932°F (500°C).

### Model R2503 Beaded Wire Probe

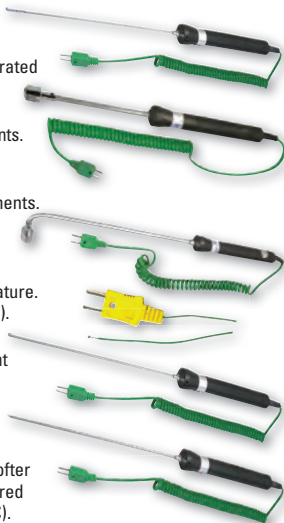
Good choice for the measurement of gas temperature. Insulated with a Teflon coating. Max. 500°F (260°C).

### Model R2504 Immersion Probe

Recommended for immersion applications; excellent for checking the temperature of water, oils and non-corrosive fluids and gels. Entire probe covered with protective metal coating. Max. 1112°F (600°C).

### Model R2505 Needle Tip Probe

Needle tip used to measure the temperature of softer food stuffs, rubbers and solids. Entire probe covered with protective metal coating. Max. 1112°F (600°C).



MODEL	DESCRIPTION	PRICE
R2500	Air/Gas Probe	\$75
R2501	Surface Probe	\$89
R2502	Right Angle Surface Probe	\$89
R2503	Beaded Wire Probe	\$20
R2504	Immersion Probe	\$75
R2505	Needle Tip Probe	\$69

## THERMOCOUPLE CALIBRATOR

- Simulate TC output
- Measure temperature from TC output
- Operable with eight types of thermocouples J, K, T, E, N, R, S, B
- Calibrate linear TC transmitter with mV source function
- Selectable °F or °C
- Automatic temperature and cold junction compensation
- USB computer interface
- Includes test leads, USB cable and software, battery and carrying case

### Specifications

Temperature Coefficient:  $\pm 0.005\%$   
 $\times$  measuring range/°C 0 to 64.4°F & 82.4°F to 122°F  
 (0 to 18°C & 28 to 50°C)

Cold Junction Tolerance:  $\pm 32.9^\circ\text{F}$  (50 to 122°F)  
 $\pm 0.5^\circ\text{C}$  (10 to 50°C)



MODEL	DESCRIPTION	PRICE
R8802	Thermocouple Calibrator	\$599

## TEMPERATURE SIMULATOR

- 6-digit LCD readout
- Automatic calibration
- Operable with eight types of thermocouples J, K, T, E, N, R, S, B
- User selectable auto power-off
- Includes set of industrial test leads, alligator clips, protective holster, soft carrying case and battery

### Specifications

Voltage Range: 100mV; 1V  
 Output Range: -10.00 to 110.00mV; -0.1000 to 1.1V  
 Resolution: 0.01mV; 0.1mV  
 Resistance Range: 400Ω  
 Output Range: 0.0 to 400.0Ω  
 Resolution: 0.1Ω



MODEL	DESCRIPTION	PRICE
VC01	Temperature Simulator	\$449

## INFRARED TEMPERATURE CALIBRATOR

- For calibrating non-contact infrared thermometers up to 932°F (500°C)
- Wide field of view to compensate for optical variations in individual infrared thermometers
- Simply set the desired temperature in increments of 0.1°, wait for the calibrator to attain equilibrium, point the infrared thermometer at the target, and measure the radiated energy
- Contact RTD reference well is located directly behind the blackbody target to assure even higher accuracies of  $\pm 0.1^\circ\text{C}$

### Specifications

Temperature Range: 122.0 to 932.0°F (50.0 to 500.0°C)  
 Resolution: 0.1°F (0.1°C)  
 Accuracy:  $\pm 1.6^\circ\text{F}$  ( $\pm 0.8^\circ\text{C}$ ): 212°F ( $\leq 100^\circ\text{C}$ );  
 $\pm 3.2^\circ\text{F}$  ( $\pm 1.6^\circ\text{C}$ ): 212 to 392°F  
 (100 to  $\leq 200^\circ\text{C}$ );  
 $\pm 5.6^\circ\text{F}$  ( $\pm 2.8^\circ\text{C}$ ): 392 to  $\leq 932^\circ\text{F}$   
 (200 to  $\leq 500^\circ\text{C}$ )  
 Target Emissivity: Fixed at 0.95  
 Cooling Time: 45 minutes to 122°F (100°C)  
 Heating Time: 40 minutes to maximum  
 Aperture Diameter: 57mm



MODEL	DESCRIPTION	PRICE
BX-500	Infrared Temperature Calibrator	\$1595

## GENERAL COMBO KIT

Includes the following:

- REED R5008 Autoranging Multimeter
- REED R2002 Compact IR Thermometer, 8:1, 932°F (500°C)
- REED R5100 AC Voltage Detector with Flashlight
- REED TL-88-1 Safety Test Leads
- REED TP-01 Type K Thermocouple Wire Probe
- REED AD-1 Temperature Input Adapter
- REED C-833R Multi-tool Carrying Case



MODEL	DESCRIPTION	PRICE
ST-TEMPKIT	General Combo Kit	\$223

## HVAC COMBO KIT

Includes the following:

- REED R2005 IR Thermometer 30:1, 2498°F (1370°C)
- REED C-380 Refrigerant Leak Detector
- REED C-383 Combustible Gas Detector
- REED R5100 AC Voltage Detector with Flashlight



MODEL	DESCRIPTION	PRICE
ST-HVACKIT2	HVAC Combo Kit	\$586

## REED COMBINATION KITS

Save with our Extensive Selection of Application Specific Combo Kits



## THERMO-HYGROMETER

- Large dual display shows ambient temperature and relative humidity
- User selectable °F/°C
- Data Hold and Min/Max function
- Compact and lightweight
- Includes battery

### Specifications

Humidity Range: 10 to 95% RH

Temperature Range: 32 to 122°F (0 to 50°C)



MODEL	DESCRIPTION	PRICE
LM-81HT	Thermo-Hygrometer	\$119
CA-52A	Soft Carrying Case	\$15

## THERMO-HYGROMETER

- Dual LCD readout displays ambient temperature and relative humidity
- User selectable °F / °C
- Min/Max memory for both functions
- Data hold and Relative functions
- Auto power off
- Includes battery

### Specifications

Humidity Range: 0 to 100% RH

Temperature Range: -4 to 140°F (-20 to 60°C)



MODEL	DESCRIPTION	PRICE
R6001	Thermo-Hygrometer	\$159
RHA-33	33% Humidity Calibration Standard	\$59
RHA-75	75% Humidity Calibration Standard	\$59
CA-05A	Soft Carrying Case	\$19

## THERMO-HYGROMETER/DATA LOGGER

- Measures relative humidity as well as temperature with a type J/type K thermocouple thermometer
- Also measures dew point and wet bulb temperatures
- Automatic temperature compensation
- Data hold and Max/Min record
- Just plug the SD card (sold separately) into the computer and it downloads directly to Excel
- Includes Humidity/Temp. probe

### Specifications

Humidity Range: 5% to 95% RH

Temperature Range: 32 to 122°F (0 to 50°C)

Dew Point Range: 13.5 to 120.1°F (-25.3 to 48.9°C)

Wet Bulb Range: -6.9 to 122.0°F (-21.6 to 50.0°C)

Type K Temp. Range: -148.0 to 2372°F (-100.0 to 1300.0°C)

Type J Temp. Range: -148.0 to 2192°F (-100.0 to 1200.0°C)



MODEL	DESCRIPTION	PRICE
SD-3007	Thermo-Hygrometer/Data Logger	\$359
TP-01	Type K Thermocouple Wire Probe	\$20
SD-2GB	2GB SD Memory Card	\$29
USB-01	USB Cable	\$79
CA-05A	Soft Carrying Case	\$19
SW-U801-WIN	Data Acquisition Software	\$89
BS-6	Tripod	\$69
AP-9VA-110V	AC adapter	\$25

## TEMPERATURE/HUMIDITY DATA LOGGER

- Stores up to 16,000 temperature and 16,000 humidity readings
- User selectable measurement rate from 2s to 24h
- Alarm displays if user-defined max/min values are exceeded
- Simply plug into your USB port to begin downloading stored information
- Includes wall mount bracket and PC compatible software



### Specifications

Humidity Range: 0 to 100% RH

Temperature Range: -40 to 158°F (-40 to 70°C)

MODEL	DESCRIPTION	PRICE
R6020	Temperature/Humidity Data Logger	\$99

## TEMPERATURE/HUMIDITY DATA LOGGER

- Records up to 32,700 ambient temperature and relative humidity readings
- User selectable recording intervals from 1s to 24h
- Minimum/Maximum function with alarm
- Download data directly to a PC via USB cable
- Includes mounting bracket with screws, USB cable, software diskette, security lock and battery



### Specifications

Humidity Range: 0 to 100% RH

Temperature Range: -40 to 158°F (-40 to 70°C)

MODEL	DESCRIPTION	PRICE
R6030	Temperature/Humidity Data Logger	\$169

## TEMPERATURE/HUMIDITY DATA LOGGER

- Records up to 16,000 readings
- Logs data for days, weeks or months
- Programmable sampling rate from 1 second to 2 hours
- Real-time clock stores data and time
- User-defined min/max alarm settings
- Program by RS232 serial port and Windows® compatible software (requires 8818)
- \* Must order 8818 when purchasing 8829

### Specifications

Humidity Range: 0 to 100% RH

Temperature Range:  
-40 to 185°F (-40 to 85°C)



MODEL	DESCRIPTION	PRICE
8829	Temperature/Humidity Data Logger	\$149
8818	RS232 Cable & Software	\$65
9801	Printer	\$349

## PINLESS MOISTURE METER

- Detects moisture content in building materials of all kinds, as well as detects moisture distribution in walls, ceilings and floors
- Non-destructive - moisture sensor runs smoothly over the surface being tested without scratching or penetrating the surface

### Specifications

Humidity Range: 0 to 100% RH

Internal Temp. Range: -4 to 122°F (-20 to 50°C)

External Temp. Range: -4 to 158°F (-20 to 70°C)

Dew Point Range: -109.7 to 122°F (-78.7 to 50°C)

Wet Bulb Range: -6.9 to 122°F (-21.6 to 50°C)



MODEL	DESCRIPTION	PRICE
R6010	Pinless Moisture Meter	\$249
CA-05A	Soft Carrying Case	\$19

## POCKET SIZE MOISTURE METER

- Measures the moisture content of sawn timber (also cardboard and paper) and hardened materials like plaster, concrete and mortar
- Impact-proof plastic housing

### Specifications

Measuring Range: Wood: 6 to 44% Moisture Content; Hardened Material: 0.2 to 2.0% Moisture Content



MODEL	DESCRIPTION	PRICE
ST-123	Pocket Size Moisture Meter	\$89
ST-123-P	Replacement Electrode Pin	\$5
CA-52A	Soft Carrying Case	\$15

## WOOD MOISTURE DETECTOR

- Measure moisture content in wood either directly with integral moisture pins or with a remote hand-press probe
- Memory contains 8 wood groups with calibrations for approx.170 species of wood
- Includes remote hand-press moisture electrode, temperature probe, protective cap, replacement pins, batteries and carrying case

### Specifications

Measuring Range: 6 to 99.9% Moisture Content



MODEL	DESCRIPTION	PRICE
ST-129	Wood Moisture Detector	\$179
ST-129-P	Replacement Electrode Pin	\$5

## DIGITAL PSYCHROMETER

- Measures temperature, RH and external temperature (probe required)
- Quickly calculates wet bulb and dew point temperatures

### Specifications

Humidity Range: 0 to 100% RH

Internal Temp. Range: -4 to 122°F (-20 to 50°C)

Dew Point Range: -109.7 to 122°F (-78.7 to 50°C)

Wet Bulb Range: -6.9 to 122°F (-21.6 to 50°C)



MODEL	DESCRIPTION	PRICE
8706	Digital Psychrometer	\$115
87P6	External Temperature Probe	\$25
RHA-33	33% Humidity Calibration Standard	\$59
RHA-75	75% Humidity Calibration Standard	\$59



## COATING THICKNESS TESTER

- Dual technology provides automatic recognition for ferrous (F) and non-ferrous (NF) metal substrates
- Magnetic induction for ferrous metal substrates
- Eddy current measurement for non-ferrous metal substrates
- User-settable high/low alarms
- Min/Max/Average
- Memory stores 400 readings
- Includes batteries, USB cable, software, calibration iron, calibration aluminum, precision standards and carrying case

### Specifications

Measuring Range: 0 to 1250 $\mu$ m, 0 to 49.21mils  
 Accuracy: 0 - 850 $\mu$ m:  $\pm$ 3% +1 $\mu$ m, 850 - 1250 $\mu$ m:  $\pm$ 5%;  
 0 - 33.46mils:  $\pm$ 3% +0.039mils, 33.46 - 49.21mils:  $\pm$ 5%  
 Min. Curvature Radius: F: 1.5mm; NF: 3mm  
 Min. Area Diameter: F: 7mm; NF: 5mm  
 Min. Substrate Thickness: F: 0.5mm; NF: 0.3mm



MODEL	DESCRIPTION	PRICE
ST-156	Coating Thickness Tester	\$329

## COATING THICKNESS TESTER

- Measure the thickness of non-magnetic coatings on magnetic or non-magnetic metal substrates
- Choice of remote probe; F probe measures the thickness of non-magnetic coatings on magnetic metal substrates; N probe measures the thickness of non-magnetic coatings on non-magnetic metal substrates
- Automatic probe recognition
- Automatic calibration
- Includes hard carrying case and batteries

### Specifications

Measuring Range: 0 to 1000  $\mu$ m,  
 0 to 40 mil  
 Accuracy:  $\pm$ 1 to 3% or 2  $\mu$ m,  
 whichever is greater  
 Sampling Time: 1 second



MODEL	DESCRIPTION	PRICE
CM-8822	Coating Thickness Tester	\$459



WE BACK UP ALL OUR PRODUCTS WITH A STANDARD 1 YEAR WARRANTY.



## ULTRASONIC THICKNESS TESTER

- Measures the thickness of steel, cast iron, aluminum, red copper, zinc, quartz glass, polyethylene, PVC, gray cast iron and nodular cast iron
- Exclusive micro-computer LSI circuit and crystal time base offer high accuracy
- Digital display provides exact readings with-out guessing or errors
- Display sound velocity at the touch of a button
- Broad band receiving sensitivity means the meter can read probes of different frequencies
- Auto calibration
- Automatic material calibration
- Selectable metric or imperial
- Includes a bottle of ultrasonic couplant gel, carrying case, and batteries



### Specifications

Measuring Range: 0.05 to 7.9"/1.5 to 200mm (#45 steel)

Resolution: 0.004"/0.1mm

Accuracy:  $\pm(0.5\% + 0.2"/0.1mm)$

Velocity Range: 500 to 9000 m/s

MODEL	DESCRIPTION	PRICE
TM-8811	Ultrasonic Thickness Tester	\$459
TM-8811PROBE	Replacement Probe	\$195

## HARDNESS TESTER

- Rebound hardness testing is particularly useful for large, coarse grained materials, forged parts and all types of cast materials because the spherical tip of the impact device processes the characteristics of the casting structure better
- Capable of automatically converting and displaying measurements into Rockwell (HRC, HRB, HRA), Brinell (HB), Leeb (HL), Vickers (HV) and Shore (HS) hardness values
- Operates on a rechargeable lithium battery
- Includes universal D impact device, small supporting ring, Leeb test block, nylon brush, battery charger, data processing software, communication cable & carrying case



### Specifications

Hardness Scale: HL, HRC, HRB, HRA, HV, HB, HS

Measuring Range: HLD: 170 to 960; HRA: 59 to 85; HRB: 13 to 100; HRC: 20 to 68; HB: 19 to 651; HV: 80 to 967; HS: 30 to 100

Measuring Direction: 360°

Display: 128 x 32 dot matrix LCD

Communication Port: Mini USB

Internal Memory: 48 to 350 groups of data

MODEL	DESCRIPTION	PRICE
R9030	Hardness Tester	\$1595

## "A" SCALE DUROMETER

- Digital durometer for Shore A hardness testing
- Designed to measure the penetration hardness of rubber, elastomers and other rubber like substances such as neoprene, silicone and vinyl
- Meets DIN 53505, ASTM D2240, ISO 7619 and JISK 7215
- Measures maximum value
- Push button zero calibration



### Specifications

Measuring Range: 0 to 90 HA

Deviation:  $\pm 1$  HA

MODEL	DESCRIPTION	PRICE
HT-6510A	"A" Scale Durometer	\$449

## FORCE GAUGE, DATA LOGGER, 20KG

- Measures tension and compression
- Data Record in Peak hold or Normal mode
- Force is measured in kg, lb or Newtons
- Real time data logger with integral 2GB SD memory card (optional)
- Includes flat head, cone head, chisel head and hook adapters, 120mm extension rod and carrying case



### Specifications

Measuring Capacity: 20.00 kg/44.10 lb/196.12 N  
 Full Scale Deflection: 0.1mm max.  
 Sampling Time: Normal: 1 second to 8 hours;  
 Peak hold: 10 to 500 ms

MODEL	DESCRIPTION	PRICE
SD-6020	Force Gauge, Data Logger, 20kg	\$695
WG-01	Wedge Grip	\$59
SD-2GB	2GB SD Memory Card	\$29
USB-01	USB Cable	\$79
SW-U801-WIN	Data Acquisition Software	\$89
AP-9VA-110V	AC Adapter	\$25

## FORCE GAUGE, DATA LOGGER, 100KG

- Measures tension and compression
- Data Record in Peak hold or Normal mode
- Force is measured in kg, lb or Newtons
- Real time data logger with integral 2GB SD memory card (optional)
- Includes separate load cell sensor with 2 hooks and cable and carrying case



### Specifications

Measuring Capacity: 100.0 kg / 220.5 lb / 980.6 N  
 Full Scale Deflection: Less than 1mm  
 Sampling Time: Normal: 1 second to 8 hours;  
 Peak hold: 10 to 500 ms

MODEL	DESCRIPTION	PRICE
SD-6100	Force Gauge/Data Logger, 100kg	\$695
WG-01	Wedge Grip	\$59
SD-2GB	2GB SD Memory Card	\$29
USB-01	USB Cable	\$79
SW-U801-WIN	Data Acquisition Software	\$89
AP-9VA-110V	AC Adapter	\$25

## TEST STAND FOR FORCE GAUGE

- Optional test stand for force gauges
- Useful tool for material tension and compression analysis
- Dimensions: 650 x 250 x 230mm (25.6 x 9.8 x 9")
- Weight: 6.9kg (15.2 lb)



MODEL	DESCRIPTION	PRICE
FS-1001	Test Stand for Force Gauge	\$1195

## NON-CONTACT PHOTO TACHOMETER

- Provides fast and accurate rpm measurements of rotating objects without contact
- Laser targeting
- Built-in memory recalls maximum, minimum values as well as last value stored
- Includes reflective tape, carrying case and batteries

### Specifications

Range: 2 to 99,999 rpm  
 Accuracy:  $\pm(0.05\% \text{ rdg.} + 1 \text{ dgt.})$   
 Detection Distance: 50 to 500mm  
 Sampling Time: 0.5 sec. over 120 rpm



MODEL	DESCRIPTION	PRICE
AT-6	Non-Contact Photo Tachometer	\$125
RT100	Reflective Tape	\$6

## CONTACT/NON-CONTACT PHOTO TACHOMETER

- Dual function unit with both contact and non-contact capabilities
- Non-contact function utilizes laser light beam
- Removeable contact adapter for contact measurements
- Recalls Max/Min and last values
- Includes large and small cone tip, battery and carrying case

### Specifications

Range: Photo: 5 to 99,999 rpm; Contact: 5 to 19,999 rpm;  
 Surface Speed: 0.05 to 1,999 mpm  
 Accuracy:  $\pm(0.05\% + 1 \text{ digit})$   
 Update Time: 1X/second



MODEL	DESCRIPTION	PRICE
ST-6236B	Non-Contact Photo Tachometer	\$179
ST-WHEEL	Replacement Measuring Wheel	\$20
ST-CONE	Replacement Cone Tip, Large	\$5
ST-FUNNEL	Replacement Funnel Tip	\$11
ST-SHAFT	Replacement Extension Shaft	\$13
RT100	Reflective Tape	\$6

## CONTACT/NON-CONTACT PHOTO TACHOMETER

- Photo tachometer and contact tachometer in one precision instrument
- Surface speed measurements in fpm or mpm
- Retains Min/Max and last reading for later recall
- Laser light for improved accuracy at a greater distance in photo mode
- Includes 3 contact adapters (2 cones, 1 funnel), surface speed wheel, reflective tape, batteries and hard carrying case

### Specifications

Range: Photo: 10 to 99,999 rpm; Contact: 0.5 to 19,999 rpm;  
 Surface Speed: 0.05 to 1,999.9 mpm (0.2 to 6560 fpm)  
 Detection Distance: 50 to 2,000mm  
 Sampling Rate: Photo: 1 sec. over 60 rpm; Contact: 1 sec. over 6 rpm  
 Laser: Class 2 red laser diode, 645nm wavelength



MODEL	DESCRIPTION	PRICE
DT-1236L	Contact Non-Contact Photo Tachometer	\$395
RT100	Reflective Tape	\$6

## CONTACT/NON-CONTACT PHOTO TACHOMETER

- Automatically holds last reading for 5 minutes and recalls minimum and maximum readings
- Characters on the 5-digit display reverse direction depending on which measurement mode you are in
- Includes 3 contact adapters (2 cones, 1 funnel), surface speed wheel, reflective tape, batteries and hard carrying case

### Specifications

Range: Photo: 5 to 99,999 tr/min; Contact: 0.5 to 20,000 tr/min;

Surface Speed: 0.05 to 1,999.9 mpmin/0.2 to 6,560 fpm

Sampling Time: Photo: 1 sec. > 6 rpm; Contact: 1 sec. > 60 tr/min

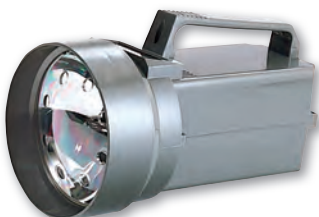
Detecting Distance: 50 to 150 mm (2" to 6") typically; 300 mm (12") max.



MODEL	DESCRIPTION	PRICE
K4010	Contact Non-Contact Photo Tachometer	\$359
AS-35C	Replacement Measuring Wheel	\$13
CONE	Replacement Cone Tip	\$16
RT100	Reflective Tape	\$6

## STROBOSCOPE

- Digital stroboscope freezes the motion and measures the speed of a rotating object, without contact
- Simply aim and synchronize the strobe's flash rate (fpm) with the speed (rpm) of the object
- Direct reading of RPMs
- Tripod mountable AC operated with 6' power cord
- Plastic injection case, plastic lens, mirror type reflector



### Specifications

Flash/Speed Rate: 100 to 10,000 fpm/rpm

Sampling Time: 1X/second

MODEL	DESCRIPTION	PRICE
K4020	Stroboscope, 110 VAC	\$329
K4020-230V	Stroboscope, 230 VAC	\$329
K4020-BULB	Replacement Bulb	\$50

## STROBOSCOPE

- Freeze the motion and measure the speed of a rotating object, without contact
- Push button that doubles and one that divides in half the flashing and display rate with just one activation
- Duty cycles from 10 minutes to 2 hours depending on rpm range
- RS232 serial interface

### Specifications

Flash Range: 10 to 10,500 rpm

Stability: 1 digit within 10 min.



MODEL	DESCRIPTION	PRICE
K4030	Stroboscope, 110 VAC	\$495
K4030-230V	Stroboscope, 230 VAC	\$495
SW-U801-WIN	Data Acquisition Software	\$89
USB-01	USB Cable	\$79

## VIBRATION METER/DATA LOGGER

- Measures vibration levels in machinery by measuring velocity and acceleration
- Frequency range meets ISO 2954 standards
- RMS, Peak hold, and Max/Min record
- Real time data logger with integral 2GB SD memory card (sold separately)
- Just plug the SD card into the computer and it downloads directly to Excel
- Includes vibration sensor with cable, magnetic base, hard carrying case and batteries



### Specifications

Velocity Range: 0.5 to 199.9 mm/s; 0.05 to 19.99 cm/s; 0.02 to 7.87 in/s

Acceleration Range: 0.5 to 199.9 m/s<sup>2</sup>; 0.05 to 20.39 g;  
2 to 656ft/s<sup>2</sup>

Auto Sampling Time: 1, 2, 5, 10, 30, 60, 120, 300, 600, 1800, 3600 seconds

MODEL	DESCRIPTION	PRICE
SD-8205	Vibration Meter/Data Logger	\$895
SD-VMB	Magnetic Base	\$12
SD-2GB	2GB SD Memory Card	\$29
USB-01	USB Cable	\$79
SW-U801-WIN	Data Acquisition Software	\$89
BS-6	Tripod	\$69
AP-9VA-110V	AC Adapter	\$25

## TORQUE METER

- High resolution torque meter with separate 15kg-cm torque sensor
- Peak, Data hold, Zero, Min/Max and Fast/Slow functions
- RS232 and USB output
- Includes carrying case and batteries



### Specifications

Measuring Range: 15 kg-cm; 13 in-lb; 147.1 N-cm

MODEL	DESCRIPTION	PRICE
TQ-8800	Torque Meter	\$995
SW-U801-WIN	Data Acquisition Software	\$89
UPCB-01	RS232 Cable	\$30
USB-01	USB Cable	\$79
BS-6	Tripod	\$69

## VANE ANEMOMETER

- Measuring Units: m/s, kph, mph, fpm and knots
- Data hold, Record (Max/Min)
- Integral vane design for one hand operation
- Pocket-sized
- Includes battery

### Specifications

Air Velocity Range: 80 to 5910 fpm;

0.4 to 30.0 m/s; 0.9 to 67 mph;

1.4 to 108 km/h; 0.8 to 58.3 knots



MODEL	DESCRIPTION	PRICE
LM-81AM	Vane Anemometer	\$99
CA-52A	Soft Carrying Case	\$15

## VANE THERMO-ANEMOMETER

- Integral rotary vane sensor for one hand operation
- Simultaneous display of air velocity and temperature
- Continuous moving air velocity averaging of measurements for up to 2 hours
- Displays Min/Max/Avg velocity with temperature values
- Includes hard carrying case and batteries

### Specifications

Air Velocity Range: 80 to 6900 fpm; 0.4 to 35 m/s; 0.9 to 78 mph;  
1.4 to 126 km/h; 0.8 to 68 knots

Temperature Range: 14 to 122°F (-10 to 50°C)



MODEL	DESCRIPTION	PRICE
8906	Vane Thermo-Anemometer	\$249
VZRS232BN	RS232 Cable & Software	\$79

## VANE THERMO-ANEMOMETER/ DATA LOGGER

- Measures air velocity as well as temperature with a type J/type K thermocouple thermometer
- Low friction ball-bearing, rotating vane probe ensures high accuracy readings
- Air velocity is measured in m/s, fpm, km/h, mph or knots
- Real time data logger with integral 2GB SD memory card (sold separately)
- Includes anemometer probe and hard carrying case

### Specifications

Air Velocity Range: 0.4 to 30.0 m/s; 1.4 to 126.0 km/h;  
0.9 to 78.3 mph; 79 to 6890 fpm; 0.8 to 68.0 knots

Type K Temp. Range: -148.0 to 2372°F (-100.0 to 1300.0°C)

Type J Temp. Range: -148.0 to 2192°F (-100.0 to 1200.0°C)

Auto Sampling Time: 1, 2, 5, 10, 30, 60, 120, 300, 600, 1800, 3600 seconds



MODEL	DESCRIPTION	PRICE
SD-4207	Vane Thermo-Anemometer/Data Logger	\$395
TP-01	Type K Thermocouple Wire Probe	\$20
SD-2GB	2GB SD Memory Card	\$29
USB-01	USB Cable	\$79
SW-U801-WIN	Data Acquisition Software	\$89
BS-6	Tripod	\$69
AP-9VA-110V	AC Adapter	\$25

## VANE THERMO-ANEMOMETER

- Provides direct reading of air velocity and temperature
- Dual display indicates m/s, ft/min, km/h, knots, mph and °C/°F
- Data hold, Record (Max/Min)
- Includes battery and hard carrying case

### Specifications

Air Velocity Range: 0.4 to 35.0 m/s (1.4 to 126.0 km/h;  
0.9 to 78.3 mph; 79 to 6890 ft/m; 0.8 to 68.0 knots)

Temperature Range: 32 to 140°F (0 to 60°C)



MODEL	DESCRIPTION	PRICE
YK-80AM	Rotating Vane Thermo-Anemometer	\$419
YK-80AMPROBE	Replacement Probe	\$249
SW-U801-WIN	Data Acquisition Software	\$89
USB-01	USB Cable	\$79
BS-6	Tripod	\$69

## MINI VANE THERMO-ANEMOMETER

- Mini-vane anemometer permits access to restricted areas
- Dual display indicates m/s, ft/min, km/h, knots, mph and °C/°F
- Data hold, Record (Max/Min)
- Includes battery and hard carrying case

### Specifications

Air Velocity Range: 0.8 to 12.0 m/s (2.8 to 43.2 km/h; 1.8 to 26.8 mph; 160 to 2358 ft/m; 0.8 to 23.3 knots)  
 Temperature Range: 32 to 176°F (0 to 80°C)



MODEL	DESCRIPTION	PRICE
YK-80AS	Mini Vane Thermo-Anemometer	\$549
YK-80ASPROBE	Replacement Probe	\$339
SW-U801-WIN	Data Acquisition Software	\$89
USB-01	USB Cable	\$79
BS-6	Tripod	\$69

## HOT WIRE THERMO-ANEMOMETER/ DATA LOGGER

- Measures air velocity as well as temperature with a type J/type K thermocouple thermometer
- Hot wire probe for precise low air velocity measurements
- Temperature is measured in °C or °F
- Data hold and Max/Min record
- Real time data logger with integral 2GB SD memory card (optional)
- Includes telescope probe and hard carrying case

### Specifications

Air Velocity Range: 0.2 to 25.0 m/s; 0.7 to 72.0 km/h; 0.5 to 44.7 mph; 40 to 3940 fpm; 0.4 to 38.8 knots  
 Type K Temp. Range: -148.0 to 2372°F (-100.0 to 1300.0°C)  
 Resolution: 0.1°F (0.1°C)  
 Type J Temp. Range: -148.0 to 2192°F (-100.0 to 1200.0°C)  
 Resolution: 0.1°F (0.1°C)  
 Auto Sampling Time: 1, 2, 5, 10, 30, 60, 120, 300, 600, 1800, 3600 seconds



MODEL	DESCRIPTION	PRICE
SD-4214	Hot Wire Thermo-Anemometer/Data Logger	\$549
TP-01	Type K Thermocouple Wire Probe	\$20
SD-2GB	2GB SD Memory Card	\$29
USB-01	USB Cable	\$79
BS-6	Tripod	\$69
SW-U801-WIN	Data Acquisition Software	\$89
AP-9VA-110V	AC Adapter	\$25



## PITOT TUBE ANEMOMETER/ DIFFERENTIAL MANOMETER

- Measure and display air velocity, air flow volume, pressure and ambient temperature with a single, compact unit
- Air velocity displayed in m/s, fpm, km/h, mph or knots
- Air flow displayed in cfm or cmm
- Pressure displayed in psi, mbar, inH<sub>2</sub>O, mmH<sub>2</sub>O or Pa
- Max., Min. and Avg. readings
- Push button calculation of rectangular or circular duct areas
- Large LCD display with backlight
- Includes black and white silica tubes, Pitot tube, power adapter, USB cable, battery, CD software and carrying case

### Specifications

Pressure Range: ±5000 Pa; 0.752 psi; 50.00mbar;  
20.07 inH<sub>2</sub>O; 509.8 mmH<sub>2</sub>O

Air Velocity Range: 1.00 to 80.00 m/s; 200 to 15,733 fpm;  
3.6 to 288.0 km/h; 2.24 to 178.66 mph; 2.0 to 154.6 knots

Air Flow Range: 0 to 99.999 ft<sup>3</sup>/min; 0 to 99.999 m<sup>3</sup>/min

Temperature Range: 32.0 to 122.0°F (0 to 50.0°C)



MODEL	DESCRIPTION	PRICE
R3001	Pitot Tube Anemometer/Differential Manometer	\$459
BS-6	Tripod	\$69

## DIFFERENTIAL PRESSURE MANOMETER, 0 TO 5PSI

- Measures gauge and differential pressure from 0 to 5 psi
- 11 selectable units of measure: psi, inH<sub>2</sub>O, bar, mbar, kPa, inHg, mmHg, ozin<sup>2</sup>, ftH<sub>2</sub>O, cmH<sub>2</sub>O, kgcm<sup>2</sup>
- Max/Min/Avg record with time stamp
- Data Hold freezes the displayed reading
- Push button zero adjust and offset readings
- Includes USB cable, tubing, hard carrying case and battery

### Specifications

Pressure Range: 5.000 psi; 138.3 inH<sub>2</sub>O; 344.7 mbar; 34.47 kPa;  
1.018 inHg; 258.5 mmHg;

80.00 ozin<sup>2</sup>; 11.53 ftH<sub>2</sub>O; 351.5 cmH<sub>2</sub>O; 0.351 kgcm<sup>2</sup>; 0.344 bar

Maximum Pressure: 20 psi



MODEL	DESCRIPTION	PRICE
R3002	Differential Pressure Manometer, 0 to 5psi	\$195
BS-6	Tripod	\$69

## DIFFERENTIAL PRESSURE MANOMETER, 0 TO 30PSI

- Digital display of gauge or differential pressure
- Select from one of 11 different pressure units: psi, kPa, mbar, bar, in Hg, mmHg, cmH<sub>2</sub>O, inH<sub>2</sub>O, ftH<sub>2</sub>O, oz-in<sup>2</sup>, kg/cm<sup>2</sup>
- Data hold
- Max/Min Record
- Includes hard carrying case, battery, connection hose and manual

### Specifications

Pressure Range: 0 to ±30 psi

Maximum Pressure: 60 psi



MODEL	DESCRIPTION	PRICE
8230	Differential Pressure Manometer, 0 to 30psi	\$239
VZRS232BN	RS232 Cable & Software	\$79



## DIFFERENTIAL PRESSURE MANOMETER, 0 TO 100PSI

- Digital display of gauge or differential pressure
- Select from one of 11 different pressure units: psi, kPa, mbar, bar, in Hg, mmHg, cmH<sub>2</sub>O, inH<sub>2</sub>O, ftH<sub>2</sub>O, oz-in<sup>2</sup>, kg/cm<sup>2</sup>
- Data hold
- Max/Min Record
- Includes connection hose, hard carrying case & battery

### Specifications

Pressure Range: 0 to ±100 psi

Maximum Pressure: 150 psi



MODEL	DESCRIPTION	PRICE
82100	Differential Pressure Manometer, 0 to 100psi	\$239
VZRS232BN	RS232 Cable & Software	\$79

## MECHANICAL COMBO KIT

Includes the following:

- REED R2100 Thermal Imaging Camera, 160x120
- REED R8100 Video Inspection Camera
- REED ST-6236B Non-Contact Photo Tachometer
- REED R5100 AC Voltage Detector with Flashlight
- REED R2000 Digital Stem Thermometer



MODEL	DESCRIPTION	PRICE
REED-MECHANICAL-KIT	Mechanical Combo Kit	\$3991

## REED COMBINATION KITS

Save with our Extensive Selection of Application Specific Combo Kits



## LIGHT METER, 20,000 LUX

- Designed for one-hand operation and to fit easily into a tool belt or pocket
- Auto-ranging
- User selectable lux / Footcandles
- Min/Max and Data hold functions
- Auto shut off and zero adjustment button
- Includes battery

### Specifications

Measuring Range: 0 to 20,000 lux; 0 to 2,000 Fc

Accuracy:  $\pm 5\%$  of reading

Sampling Time: 1 time/second



MODEL	DESCRIPTION	PRICE
LM-81LX	Light Meter, 20,000 lux	\$109
CA-52A	Soft Carrying Case	\$15

## LIGHT METER, 20,000 LUX

- Digital dual filter light meter designed to measure a wide range of lighting types
- Large, 3-digit, 0.5" high, LCD display provides clear readouts even in high ambient light levels
- Data hold function
- Zero adjustment screw
- Over range and low battery indication
- Includes battery

### Specifications

Measuring Range: 0 to 20,000 lux

Accuracy:  $\pm 5\%$  of reading

Sampling Time: 2 times/second



MODEL	DESCRIPTION	PRICE
YK-10LX	Light Meter, 20,000 lux	\$119
CA-52A	Soft Carrying Case	\$15

## LIGHT METER, 50,000 LUX

- User selectable lux / Footcandles
- Max and Data hold function
- Auto shut off
- Compact and lightweight
- Includes carrying case and battery

### Specifications

Measuring Range:

0 to 50,000 lux, 0 to 5,000 Fc

Accuracy:  $\pm 5\%$  of reading < 10,000 lux

Sampling Time: 1.5 times/second



MODEL	DESCRIPTION	PRICE
ST-1301	Light Meter, 50,000 lux	\$89



**WE BACK UP ALL  
OUR PRODUCTS WITH  
A STANDARD 1 YEAR  
WARRANTY.**

## LIGHT METER/DATA LOGGER, 100,000 LUX

- Measures ambient light levels as well as temperature with a type J/type K thermocouple thermometer
- Light levels are measured in foot-candles or lux
- Real time data logger with integral 2GB SD memory card (sold separately)
- Plug the SD card and it downloads directly to Excel
- Includes soft carrying case and battery

### Specifications

Measuring Range: 2,000, 20,000, 100,000 lux; 200, 2,000, 10,000 Ft-cd  
Accuracy:  $\pm(4\% + 2 \text{ dgt})$

Type K Temp. Range: -148.0 to 2372.0°F (-100.0 to 1300°C)

Type J Temp. Range: -148.0 to 2192.0°F (-100.0 to 1200°C)

Auto Sampling Time: 1, 2, 5, 10, 30, 60, 120, 300, 600, 1800, 3600 seconds

Data Output: USB/RS232 PC computer interface



MODEL	DESCRIPTION	PRICE
SD-1128	Light Meter/Data Logger, 100,000 lux	\$249
TP-01	Type K Thermocouple Wire Probe	\$20
SD-2GB	2GB SD Memory Card	\$29
USB-01	USB Cable	\$79
SW-U801-WIN	Data Acquisition Software	\$89
AP-9VA-110V	AC Adapter	\$25

## ENVIRONMENTAL METER/DATA LOGGER

- Measures relative humidity, air velocity, light levels and temperature with a type J/type K thermocouple thermometer
- Also measures sound level with optional adapter
- Air velocity is measured in m/s, ft/min, km/h, mph or knots
- Plug the SD card (sold separately) and it downloads directly to Excel
- Includes multi-function probe, hard carrying case & batteries

### Specifications

Air Velocity Range: 0.4 to 30.0 m/s; 1.4 to 128.0 km/h;  
0.9 to 78.3 mph; 79 to 6890 fpm; 0.8 to 68.0 knots

Humidity Range: 0% to 95% RH

Light Range: 0 to 20,000 lux (0 to 1,860 Ft-cd)

Type K Temp. Range: -148.0 to 2372°F (-100.0 to 1300°C)

Type J Temp. Range: -148.0 to 2192°F (-100.0 to 1200°C)



MODEL	DESCRIPTION	PRICE
SD-9300	Environmental Meter/Data Logger	\$295
SL-417	Sound Level Adapter	\$169
TP-01	Type K Thermocouple Wire Probe	\$20
SD-2GB	2GB SD Memory Card	\$29
USB-01	USB Cable	\$79
SW-U801-WIN	Data Acquisition Software	\$89
AP-9VA-110V	AC Adapter	\$25

## ENVIRONMENTAL METER

- 4-in-1 multi-function meter... anemometer, humidity meter, light meter and type-K digital thermometer
- Velocity Units: m/s, kph, mph, knots, and fpm
- °F or °C and lux or Ft-cd selectable
- Includes battery

### Specifications

Air Velocity Range: 0.2 to 30.0 m/s; 1.4 to 108.0 kph;  
0.9 to 67.0 mph; 80 to 5910 fpm; 0.8 to 58.3 knots

Temperature Range: -148 to 2372°F (-100 to 1300°C)

Humidity Range: 0 to 95% RH

Light Range: 0 to 20,000 lux (0 to 2000 Ft-cd)



MODEL	DESCRIPTION	PRICE
LM-8000	Environmental Meter	\$199

## HEAT STRESS WBGT METER

- Wet Bulb Globe Temperature (WBGT) considers the effects of temperature, humidity and direct or radiant sunlight
- Heat Stress Index measures how hot it feels when humidity is combined with temperature, air movement and radiant heat
- View individual temperatures or indices in either °F or °C
- User adjustable WBGT threshold with audible alarm if threshold is exceeded
- Tripod mount design for longterm monitoring
- Includes batteries

### Specifications

Humidity Range: 0 to 100% RH

Air Temp. Range: 32 to 122°F (0.0 to 50.0°C)

Black Globe Temp. Range: 32 to 176°F (0.0 to 80.0°C)

WBGT Temp. Range: 32 to 122°F (0.0 to 50.0°C)



MODEL	DESCRIPTION	PRICE
8778	Heat Stress WBGT Meter	\$219
BS-6	Tripod	\$69
VZRS232BN	RS232 Cable & Software	\$79
HR33	33% Humidity Calibration Standard	\$69
HR75	75% Humidity Calibration Standard	\$69

## HEAT STRESS WBGT METER/ DATA LOGGER

- Wet Bulb Globe Temperature (WBGT) considers the effects of temperature, humidity and direct or radiant sunlight
- Also measures humidity, wet bulb, dew point and air temperatures
- User adjustable WBGT threshold with audible alarm if threshold is exceeded
- No extra software needed, just plug the SD card (sold separately) into the computer and it downloads directly to Excel
- Includes brass black globe with sensor and carrying case

### Specifications

Humidity Range: 5 to 95% RH

Air Temp. Range: 32 to 122°F (0 to 50°C)

Dew Point Temp. Range: -13.5 to 120.1°F (-25.3 to 48.9°C)

Wet Bulb Temp. Range: -6.9 to 122.2°F (-21.6 to 50.0°C)

WBGT Temp. Range: Indoor: 32 to 138°F (0 to 59°C);  
Outdoor: 32 to 132°F (0 to 56°C)

Auto Sampling Time: 1, 2, 5, 10, 30, 60, 120, 300, 600,  
1800, 3600 seconds



MODEL	DESCRIPTION	PRICE
SD-2010	Heat Stress WBGT Meter/Data Logger	\$479
SD-2GB	2GB SD Memory Card	\$29
SW-U801-WIN	Data Acquisition Software	\$89
USB-01	USB Cable	\$79
BS-6	Tripod	\$69
AP-9VA-110V	AC adapter	\$25

## SOUND LEVEL METER

- Meets IEC651 Type 2 requirements
- Dual range measurement (Hi/Lo)
- "A & C" frequency weighting
- Data Hold, Max Hold functions and low battery indication
- Tripod mount for long-term monitoring
- Includes microphone windshield ball, battery and carrying case

### Specifications

Measuring Range: Low: 35 to 100 dB;  
High: 65 to 135 dB

Resolution: 0.1 dB

Accuracy:  $\pm 1.4$  dB

Frequency Range: 31.5 Hz to 8 kHz

Time Weighting: Fast/Slow (A & C)

Microphone: 1/2" electret condenser



MODEL	DESCRIPTION	PRICE
R8050	Sound Level Meter	\$195
SC-05	Acoustic Calibrator	\$249
BS-6	Tripod	\$69
SB-01	Windshield Ball	\$7

## SOUND LEVEL METER

- Meets IEC 61672 Type I requirements and offers superior accuracy for critical measurements
- Triple range measurement, 40 dB steps with over/under range indication
- "A & C" frequency weighting
- "Fast/Slow" time weighting
- 1/2" electret condenser microphone
- Internal 94dB/1kHz calibration
- Large, easy-to-read LCD display
- Data Hold and Max Hold
- Low battery indication
- AC output signal for use with dataloggers
- 3.5mm dia. phone output terminal
- Includes hard carrying case and batteries (windshield ball must be ordered separately)

### Specifications

Measuring Range:  
30 to 70 dB, 60 to 100 dB, 90 to 130 dB

Frequency Range: 31.5 Hz to 16.0 kHz

Frequency Weighting: A: "Human Listening" response for environmental sound level measurement;  
C: "Flat" response for checking machinery noise and sound level pressure of equipment

Time Weighting:  
Fast: 200ms; Slow: 500ms



MODEL	DESCRIPTION	PRICE
SL-4022	Sound Level Meter	\$395
SC-05	Acoustic Calibrator	\$249
SB-01	Windshield Ball	\$7
BS-6	Tripod	\$69

## SOUND LEVEL METER/ DATA LOGGER

- IEC651 Type II
- Auto-ranging from 30 to 130 dB
- 32,000 record datalogger
- User selectable sampling intervals
- Real-time clock logs each data point with time and date
- Max/Min function
- Includes calibration screwdriver, windshield ball, RS232 cable, Windows datalogging software, carrying case and battery

### Specifications

Measuring Range: 32 to 80 dB, 50 to 100 dB, 80 to 130 dB

Accuracy:  $\pm 1.5$  dB @ 94 dB

Frequency Range: 31.5 Hz to 8 kHz



MODEL	DESCRIPTION	PRICE
C-322	Sound Level Meter/Data Logger	\$459
BS-6	Tripod	\$69
SC-05	Acoustic Calibrator	\$249
SB-01	Windshield Ball	\$7
USB-300	USB Cable	\$75
CFD00120V-09V10	120VAC Power Supply	\$30

## SOUND LEVEL METER/DATA LOGGER

- IEC61672 Class 2
- A/C frequency weighting
- Fast/Slow time weighting
- Peak hold, Data hold and Max/Min record
- Easy to read LCD with backlight
- Real time data logger with SD memory card (sold separately)
- Just plug the SD card into the computer and it downloads directly to Excel
- Includes batteries

### Specifications

Measuring Range: 30 to 130dB

Accuracy: 31.5Hz  $\pm 3.5$  dB, 63 Hz  $\pm 2.5$  dB, 125 Hz  $\pm 2.0$  dB,  
250 Hz  $\pm 1.9$  dB, 500 Hz  $\pm 1.9$  dB, 1 kHz  $\pm 1.4$  dB, 2 kHz  $\pm 2.6$  dB,  
4 kHz  $\pm 3.6$  dB, 8 kHz  $\pm 5.6$  dB

Frequency Range: 31.5 Hz to 8 kHz



MODEL	DESCRIPTION	PRICE
SD-4023	Sound Level Meter/Data Logger	\$395
SC-05	Sound Level Calibrator	\$249
SB-01	Wind Shield Ball	\$7
SD-2GB	2GB SD Memory Card	\$29
USB-01	USB Cable	\$79
SW-U801-WIN	Data Acquisition Software	\$89
CA-05A	Soft Carrying Case	\$19
BS-6	Tripod	\$69
AP-9VA-110V	AC Adapter	\$25

## SOUND LEVEL CALIBRATOR

- Generates a stable acoustic signal at a controlled frequency and amplitude to verify the accuracy of your sound level meter
- IEC 942 Class 2
- Output sound pressure levels of 94dB and 114dB



MODEL	DESCRIPTION	PRICE
SC-05	Sound Level Calibrator	\$249

## PORTABLE INDOOR AIR QUALITY METER

- Simultaneously monitors carbon dioxide (CO<sub>2</sub>), relative humidity and temperature
- Instantaneous readings are displayed on a high resolution LCD with backlight
- Dew point and wet bulb temperatures can also be displayed
- Hold function freezes displayed reading
- Maximum, minimum and average functions
- Audible warning alarm of excessive CO<sub>2</sub> concentrations

### Specifications

Ranges: CO<sub>2</sub>: 0 to 5,000 ppm;  
 Temperature: 14 to 140°F (-10 to 60°C);  
 Humidity: 0 to 99.9% RH;  
 Dew Point: -100.12 to 140°F (-73.4 to 60°C);  
 Wet Bulb: 8.06 to 140°F (-13.3 to 60°C)

Response Time: 30 seconds  
 Alarms: Audible: 80dB



MODEL	DESCRIPTION	PRICE
77535	Portable Indoor Air Quality Meter	\$489
RHA-33	33% Humidity Calibration Standard	\$59
RHA-75	75% Humidity Calibration Standard	\$59
VZRS232BN	RS232 Cable & Software	\$79

## IAQ METER/DATA LOGGER

- Measures CO<sub>2</sub>, CO, O<sub>2</sub>, humidity and temperature
- Records readings from 3 probes simultaneously
- Audible alarm setpoint
- Data hold and Max/Min record
- Real time data logger with integral 2GB SD memory card (sold separately)
- Just plug the SD card into the computer and it downloads directly to Excel
- Includes humidity probe, CO probe, CO<sub>2</sub> probe, O<sub>2</sub> probe, and hard carrying case

### Specifications

CO<sub>2</sub> Sensor: Non-dispersive infrared  
 Range: 0 to 4,000 ppm  
 CO Sensor: Galvanic cell  
 Range: 0 to 1,000 ppm  
 O<sub>2</sub> Sensor: Galvanic cell  
 Range: 0 – 30% O<sub>2</sub>  
 Alarm Threshold: <18.0% O<sub>2</sub>  
 Humidity Sensor: Precision capacitive  
 Range: 5 to 95% RH  
 Temperature Range: 32 to 122.0°F (0 to 50.0°C)  
 Dew Point Temp. Range: -13.5 to 120.1°F (-25.3 to 48.9°C)  
 Wet Bulb Temp. Range: -6.9 to 122.1°F (-21.6 to 50°C)



MODEL	DESCRIPTION	PRICE
SD-9901	IAQ Meter/Data Logger	\$1195
SD-2GB	2GB SD Memory Card	\$29
BS-6	Tripod	\$69
TP-01	Thermocouple Wire Probe	\$20
USB-01	USB Cable	\$79
SW-U801-WIN	Data Acquisition Software	\$89
AP-9VA-110V	AC adapter	\$25



## CARBON MONOXIDE METER

- Utilizes a stabilized electrochemical gas specific fast response sensor
- Audible alarm starts at 35ppm
- Max, Data hold and Auto shut off
- Backlit LCD display
- Includes battery and carrying case

### Specifications

Measuring Range: 1 to 1000 ppm

Accuracy:  $\pm 5\%$  or  $\pm 10$  ppm, whichever is greater



MODEL	DESCRIPTION	PRICE
CO-180	Carbon Monoxide Meter	\$259

## CARBON MONOXIDE METER

- Detects a wide variety of gases, including some toxic gases and nuisance vapors
- Following is a partial list of the more common gases detected: Natural Gas; Propane; Butane; Methane; Acetone; Alcohol; Ammonia; Steam; Carbon Monoxide; Gasoline; Jet Fuel; Hydrogen Sulfide; Smoke; Industrial Solvents; Lacquer Thinner; Naphtha
- Audible (variable tick rate) and visible indications help to pinpoint leak sources
- Adjustable sensitivity helps to eliminate background gas concentrations in contaminated environments
- Includes batteries and earphone jack for noisy environments

### Specifications

Sensitivity: 50 ppm methane

Response Time: < 2 seconds

Alarm Limit: At 10% LEL for methane (can be calibrated for other concentrations or gases up to 40% LEL)

Probe Length: 16" gooseneck



MODEL	DESCRIPTION	PRICE
GD-3300	Combustible Gas Detector	\$139
TGS2611-C00	Replacement Sensor Tip	\$49

## COMBUSTIBLE GAS DETECTOR

- Gases sensed: gasoline, propane, natural gas or fuel oil
- Detects leaks as small as 5ppm of gasoline
- Audible and visual leak indications
- Includes reference leak source, batteries and hard carrying case

### Specifications

Sensitivity: Variable, as low as 5 ppm (gasoline)

Alarm Settings: 7 LED tricolor bar indicator; variable intensity audible alarm

Probe Length: 15.5" (400mm)



MODEL	DESCRIPTION	PRICE
C-383	Combustible Gas Detector	\$289
S-100B	Replacement Sensor	\$49

## REFRIGERANT LEAK DETECTOR

- Detects and pinpoints even small leaks of refrigerant gases
- Detects all halogenated refrigerants
- Quickly and accurately mark any leak spot
- Audible and visual leak indications
- No user calibration required
- Includes reference leak source, batteries and carrying case

### Specifications

Gases Sensed: CFCs: R11, R12, R13; HCFCs: R22, R502, R500; HFCs: R134a, R123, R125, R23, R404A, R407C, R410A and other halogen based compounds

Alarm Settings: Buzzer, Tricolor LED bar indicator

Response Time: Less than 1 second

Probe: 15" (390mm) flexible stainless probe

Accuracy:  $\pm 5\%$  or  $\pm 10$  ppm, whichever is greater



MODEL	DESCRIPTION	PRICE
C-380	Refrigerant Leak Detector	\$249
R-134A	Replacement Sensor	\$65
LC-R01	Replacement Reference Leak Source	\$22

## ULTRASONIC LEAK DETECTOR

- Locates leaks generated by pressure, vacuum, conduit, water, gas or air
- Leakage level is displayed by an LED bargraph and audible sound
- Ultrasonic Transmitter sends a 40 kHz signal which, when detected by the meter, indicates the location and magnitude of a leak (sold separately)
- Includes rubber bottle plug with plastic tubing, 1/2" PVC pipe assembly for attaching to top of detector, battery and carrying case



MODEL	DESCRIPTION	PRICE
GS-5800	Ultrasonic Leak Detector	\$349
GS-400	Ultrasonic Transmitter	\$89

## MICROWAVE LEAKAGE DETECTOR

- Detect very low levels of microwave leakage
- Audible (beep) and visual (flashing red light) alarm signals
- Built-in memory recalls maximum, minimum values as well as last value stored
- Includes soft carrying case and battery

### Specifications

Measuring Range: 0 to 9.99 mW/cm<sup>2</sup>

Accuracy:  $\pm 1$  mW/cm<sup>2</sup>

Alarm Level: 5.0 dB



MODEL	DESCRIPTION	PRICE
ST-2G	Microwave Leakage Detector	\$59

## REFRIGERANT LEAK DETECTOR

- Measures electromagnetic radiation levels from video terminals, fans, faulty wiring, power lines and other equipment
- Includes battery

### Specifications

Measuring Range: 0.1 mG to 199.9 mG  
 Frequency Bandwidth: 30 to 300 Hz  
 (ELF frequency range)  
 Number of Axes: Single axis  
 Accuracy:  $\pm 4\%$  at 50-60 Hz  
 Sampling Time: 2.5X / second



MODEL	DESCRIPTION	PRICE
EMF-822A	Electromagnetic Field Meter	\$169

## ELECTROMAGNETIC FIELD METER

- Detects DC and AC magnetic fields
- Measures in milliGauss (mG) or microTesla ( $\mu T$ )
- N pole/S pole indicator
- High precision magnetometer can even measure the absolute environment of the Earth's magnetic field as reference
- Zero adjustment button for relative measurements
- Data hold, record max. and min. reading
- Includes probe and hard carrying case

### Specifications

Measuring Range: -3000 to 3000mG, -300 to 300 $\mu T$   
 Frequency Response: AC/DC: 40 Hz to 10 KHz  
 Field Direction: Uniaxial  
 Sampling Time: Approx. 1 second  
 Data Output: RS 232/USB computer interface



MODEL	DESCRIPTION	PRICE
GU-3001	Electromagnetic Field Meter	\$695
USB-01	USB Cable	\$79
SW-U801-WIN	Data Acquisition Software	\$89
BS-6	Tripod	\$69

## BLUETOOTH RADIATION METER

- Monitors the environment to alert users to the presence of radioactive material
- Detects Alpha, Beta, Gamma, and X-radiation
- Adjustable indication of average time
- Can store 4000 groups of data internally
- Interfaces to a computer via Bluetooth
- Includes hard carrying case

### Specifications

Radiation Dose Rate Range: 0.0001 - 1000 $\mu Sv/h$   
 Pulse Dose Rate Range: 0 - 4000cpm/cps  
 Accumulated Radiation Dose Value: 0.001 $\mu Sv$  - 9999Sv  
 Accumulated Pulse Dose Rate: 0 - 9999  
 Average Time: Adjustable 2 to 12 seconds



MODEL	DESCRIPTION	PRICE
R8008	Bluetooth Radiation Meter	\$495

## STUD/METAL/AC VOLTAGE DETECTOR

- Stud/metal/AC voltage finder with laser line level
- Select Normal Scan, detect up to 3/4" depth, or Deep Scan, detection up to 1-1/2" depth
- 180° pivoting laser plane with level and plumb vials
- Thumb dial adjustment feet for leveling the laser
- 20' laser line projection onto work surface with 90° squaring
- LED display with continuous live wire detection
- LCD sensing and mode display with target graphics
- Vertical and horizontal mounting holes
- Ergonomically designed for comfort and grip
- Auto power off

### Specifications

Laser Type: 650nm Class IIIA diode

Laser Accuracy: 1/2" at 20 ft.

Length of Laser Line: up to 20 ft.



MODEL	DESCRIPTION	PRICE
LA-1010	Stud/Metal/AC Voltage Detector	\$79
CA-05A	Soft Carrying Case	\$19

## ULTRASONIC DISTANCE METER (52FT/16M)

- Ultrasonic distance meter measures in imperial/metric
- Laser target pointer
- Measurements taken from front or rear of unit
- Data store/recall
- Computes areas and volumes
- 5 groups of value in memory
- Sum of lengths
- Auto/manual shut-off
- LCD backlight
- Audible confirmation of reading
- Includes soft carrying case and batteries

### Specifications

Measuring Range: 1.64" to 52.48' (5cm to 16m)

Accuracy: ± 1% of reading + 1 digit



MODEL	DESCRIPTION	PRICE
DM-01	Ultrasonic Distance Meter (52ft/16m)	\$49

**WE BACK UP**  
**ALL OUR PRODUCTS**

**1 YEAR**  
**WARRANTY**

## LASER DISTANCE METER (147FT/45M)

- Easily measure hard-to-access areas, like high ceilings, with laser targeting
- Instant measurement with one-button operation
- Quick calculation of area (square footage) and volume
- Easy addition and subtraction of measurements
- Pythagoras calculation for determining distance indirectly from two or three other measurements
- Maximum/Minimum measurements
- Reference point setting function
- Metric or Imperial units of measure
- Display backlight
- Storage of last 10 measurement results
- Includes battery

### Specifications

Measuring Range: -0.05 to 45m

Accuracy:  $\leq 10\text{m}$ :  $\pm 2.00\text{mm}$ ;  $> 10\text{m}$ :  $\pm 2\text{mm} \pm 0.05$   
x distance in metres -10)

Laser Type: Class 2,  $< 1\text{mW}$ , 620 to 690 nm



MODEL	DESCRIPTION	PRICE
R8002	Laser Distance Meter (147ft/45m)	\$139

## LASER DISTANCE METER (164FT/50M)

- One-person distance measuring and estimating tool that measures difficult to reach places
- Laser target pointer
- Auto horizontal distance
- Indirect measurement using Pythagoras
- Angle, slope and pitch measured by placing body of meter on the slope itself or aligning it at the desired angle
- Area and volume calculations
- Addition/subtraction functions
- Min/max distance tracking
- Store/recall up to 20 measurements
- Multi-line display with illumination
- Buzzer indication of reading
- IP54 (Dust and splash-proof)
- Includes battery

### Specifications

Measuring Range: 5cm to 50m (2" to 164')

Accuracy:  $\pm 1.5\text{ mm}$  ( $\pm 0.06"$ )

Laser: Class 2, 635nm,  $< 1\text{mW}$



MODEL	DESCRIPTION	PRICE
R8001	Laser Distance Meter (164ft/50m)	\$195

# REED

## COMBINATION KITS

Save with our Extensive Selection  
of Application Specific Combo Kits



## VIDEO INSPECTION CAMERA

- High definition inspection scope detects and diagnoses problems without direct physical or visual access
- 17mm imager head with 1m flexible gooseneck retains configured shape and is waterproof
- Gooseneck is expandable up to 30' with optional cable extensions
- Four high visibility LED lights provide illumination in dark locations with brightness control
- Includes magnet, hook, mirror attachments and batteries



### Specifications

TFT LCD Size: 2.4"

Display Resolution: 480 x 234

Viewing Distance: 5.9 to 9.8" (15 to 25cm)

Viewing Angle: 0 to 180°

Max. Resolution: 640 x 480

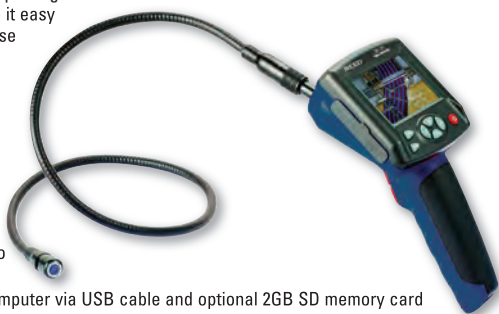
Depth of Field (DOF): 10mm to infinity

Camera Diameter: 0.66" (17mm); Length: 39" (1m)

MODEL	DESCRIPTION	PRICE
R8100	Video Inspection Camera	\$189
BS-C6	6' Cable Extension	\$75
BS-15-9C3	9mm Replacement Camera Head w/ 3' Cable	\$119

## VIDEO INSPECTION CAMERA

- Comfortable pistol grip design and forward facing controls make it easy to detect and diagnose the unreachable
- High visibility 3.2" color TFT LCD monitor with 320x240 pixel resolution
- Camera and video functions allows you to save high resolution JPG images and live video
- TV compatible
- Transfer files to a computer via USB cable and optional 2GB SD memory card
- Rechargeable lithium-ion battery
- Includes video borescope, imager head, magnet, hook and mirror attachments, 3.7V lithium battery, DC power supply, USB cable, video output cable and hard carrying case



### Specifications

Viewing Distance: 5.9 to 9.8" (15 to 25cm)

Viewing Angle: 0 to 180°

LCD Monitor: 640 x 480 pixels, 320 x 240 pixels max. resolution

Camera Diameter: 0.66" (17mm); Length: 39" (1m)

Dimensions: 9.5 x 3.9 x 6.3" (240 x 100x 160mm)

MODEL	DESCRIPTION	PRICE
BS-150	Video Inspection Camera	\$299
SD-2GB	2GB SD Memory Card	\$29
BS-C6	6' Cable Extension	\$75
BS-15-9C3	9mm Replacement Camera Head w/ 3' Cable	\$119
BS-150/BATTERY	Replacement Battery	\$19

# HD VIDEO PIPE INSPECTION SYSTEM

- Cost effective portable inspection camera designed to deliver quality video inspection in a wide range of applications including: sewers, building ducts/piping, wells, and power plants
- System includes camera head, cable reel, battery pack and DVR
- High resolution CCD chip is designed to capture bright, crisp, color video of the inspection area
- 7" TFT LCD display presents a live crisp color image at your fingertips
- Cable reel is mounted and rotatable in the case
- Camera head contains 12 white LED lights, a flexible spring coiled joint to navigate corners, a scratch-resistant sapphire lens cover and a stainless steel housing that allows the camera to withstand various hits
- Sun visor is included to act as a sun shield for outdoor inspections
- Includes camera head, cable reel and push cable, re-mote control, toolbox with DVR, battery pack and cable, car charger, fuse (x2), ball guide (x2), plastic skid, screw (x2), nut (x2) and waterproof ring, adapters, screwdriver

## Specifications

### Camera

Focus Distance: 20cm (approx)

Depth-of-View: 100cm (approx)

Lighting: Built-in 12 white LED

Waterproof: 20m water  
(camera fixed on cable)

### Cable Wheel

Cable Length: 20m

### DVR

Screen: 7" 16:9 high-definition  
color LCD

Resolution: 800 x 480 RGB

External Memory:

Supports SD memory  
card up to 32GB

### Battery Pack

Running Time: 7 hour (Record),  
9 hour (Play Back)



MODEL	DESCRIPTION	PRICE
R9000	HD Video Pipe Inspection System	\$1595

**WE BACK UP**  
**ALL OUR PRODUCTS** | **1 YEAR**  
**WARRANTY**



We are proud to offer our customers  
quality products at economical prices.



## PH METER

- Dual displays of temperature and pH
- One touch calibration for up to 3 points
- Replaceable pH electrode module
- Data hold • IP65 Rated (Waterproof)
- Protective sensor cap keeps sensor moistened
- Includes batteries

### Specifications

pH Range: 0.00 to 14.00 pH

Temperature Range: 0 to 32 to 140°F (60.0°C)



MODEL	DESCRIPTION	PRICE
8689	Digital pH Pen	\$119
86P8	Replacement pH Electrode	\$49
PH-04	4.0 pH Buffer Solution	\$15
PH-07	7.0 pH Buffer Solution	\$15

## PH/ORP METER/DATA LOGGER

- Measures pH and ORP levels in water
- Auto 3-point calibration for pH 4.0, pH 7.0 and pH 10.0
- Plug the SD card (sold separately) to download directly to Excel
- Model SD-230-KIT2 Kit, includes: SD-230 pH/ORP Meter/ Data Logger, ORP-14 ORP Electrode & PE-11 pH Electrode

### Specifications

pH Range: 0 to 14.00 pH

mV Range: -1999 to 1999 mV



MODEL	DESCRIPTION	PRICE
SD-230	pH/ORP Meter/Data Logger	\$249
SD-230-KIT2	pH/ORP Meter Kit	\$438
PE-01	pH Electrode	\$129
PE-03	pH Electrode	\$69
PE-11	pH Electrode	\$79
ORP-14	ORP Electrode	\$159
PH-04	4.0 pH Buffer Solution	\$15
PH-07	7.0 pH Buffer Solution	\$15
TP-07	ATC Temperature Probe	\$59
SD-2GB	2GB SD Memory Card	\$29
USB-01	USB Cable	\$79
SW-U801-WIN	Data Acquisition Software	\$89
AP-9VA-110V	AC Adapter	\$25

## CONDUCTIVITY/TDS/SALINITY METER/DATA LOGGER

- Measures conductivity, total dissolved solids (TDS) and salt levels in water
- Plug the SD card (sold separately) to download directly to Excel
- RS232 and USB computer interface
- Includes probe and hard carrying case

### Specifications

Conductivity Range: 200µS, 2mS, 20mS, 200mS

TDS Range: 200, 2000, 20,000, 200,000 ppm

Salinity Range: 0 to 12% salt (% weight)



MODEL	DESCRIPTION	PRICE
SD-4307	Conductivity/TDS/Salinity Meter/Data Logger	\$379
SD-2GB	2GB SD Memory Card	\$29
TP-01	Thermocouple Wire Probe	\$20
USB-01	USB Cable	\$79
SW-U801-WIN	Data Acquisition Software	\$89
AP-9VA-110V	AC Adapter	\$25

## SALINITY REFRACTOMETER

- Salinity refractometers are useful for measuring the concentration of natural or artificial seawater in aquariums, holding tanks, and breeding ponds
- They can also be used for controlling the saltwater concentration when preparing pickles, measuring the concentration of saltwater used in rinsing and cooking sea products

### Specifications

Range: 0 to 28%

Resolution: 0.2%

Accuracy:  $\pm 0.2\%$



MODEL	DESCRIPTION	PRICE
R9600	Salinity Refractometer	\$119
RPDPA1	Lens Cover	\$31

## BRIX REFRACTOMETER

- A Brix Refractometer shows the concentration percentage of the soluble solids content (total solids) of a sample (water solution)
- Brix% is calibrated to the number of grams of cane sugar contained in 100g of cane sugar solution (When measuring a sugar solution, the Brix% should perfectly match the actual concentration)
- The soluble solids content is the total of all the solids dissolved in the water - beginning with sugar, salts, protein, acids, etc. and the measurement reading value

### Specifications

Range: 0 to 32%

Resolution: 0.2%

Accuracy:  $\pm 0.2\%$



MODEL	DESCRIPTION	PRICE
R9500	BRIX Refractometer	\$119
RPDPA1	Lens Cover	\$31

## BATTERY COOLANT CHECKER

- It is essential to know the concentration and freezing point of anti-freeze coolants for vehicular safety
- This tester monitors the freezing point of both Ethylene Glycol and Propylene Glycol
- In addition, it indicates battery recharge level
- This tester is simple to use; requiring only a few drops to provide accurate readings within seconds

### Specifications

*Propylene Glycol*

Range: -50 to 32°F (-45.5 to 0°C)

Res'n: -12.2°C (10°F)

*Ethylene Glycol*

Range: -50 to 32°F  
(-45.5 to 0°C)

Res'n: 10°F (-12.2°C)



MODEL	DESCRIPTION	PRICE
R9700	Battery Coolant Checker	\$119
RPDPA1	Lens Cover	\$31

## CALIPER & MICROMETER

- 6-digit LCD display
- mm/inch select and zero button

### DC-515 Caliper

Range: 0 to 6" x 0.0005"  
 Resolution: 0 to 150mm x 0.01mm  
 Dimensions: 235 x 75 x 15mm



DC-515

### DC-516 Micrometer

Range: 1" x 0.00005"  
 Resolution: 25mm x 0.001mm  
 Dimensions: 156 x 56 x 22mm



DC-516

MODEL	DESCRIPTION	PRICE
DC-515	Digital Caliper	\$74
DC-516	Digital Micrometer	\$159

## DIGITAL STOP WATCH

- High contrast digital display
- Records real time and split times
- 1/100th second resolution
- Displays hour, minute, second, and day of the week
- Alarm and snooze functions
- Shock and water resistant case
- Includes neck lanyard and battery



MODEL	DESCRIPTION	PRICE
SW600	Digital Stop Watch	\$24

## HEAT STRESS STOP WATCH

- Measures temperature and humidity, and calculates heat index as well as dew point
- Combines air temperature and relative humidity measurements in an attempt to determine the human-perceived equivalent temperature or "how hot it feels"
- Calendar mode displays day, date and time
- Stopwatch/chronograph mode with 1/100 second resolution
- Fastest/Slowest/Average Lap recall
- 99 lap counter with 30 lap/split memory
- 10 hour countdown timer with audible beeper warning for the last 5 seconds
- 12 or 24 hour clock operation
- Full LCD display with LED backlight
- Silent operation option
- Dual power: solar panel and battery
- 1 ATM water resistant (IPX4 rated)

### Specifications

Timing Capacity: 9 hrs, 59 mins, and 59 secs  
 Heat Index Range: 70 to 122°F (22 to 50°C)  
 Accuracy: ±0.2%  
 Temperature Range: 23 to 122°F (-5 to 50°C)  
 Humidity Range: 1 to 99% RH



MODEL	DESCRIPTION	PRICE
SW700	Heat Stress Stop Watch	\$49

## DIGITAL SCALE

- LCD display with automatic backlight
- Platform size: 195mm x 150mm x 40mm
- Cabinet size: 150mm x 145mm x 48mm

### Model GM-600G

- 600g capacity x 1g resolution
- Measures in grams, ounces and parts counting

### Model GM-3KG

- 3000g capacity x 1g resolution
- Measures in grams, pounds and parts counting
- Self calibration with memory



GM-600G



GM-3KG

MODEL	DESCRIPTION	PRICE
GM-600G	Digital Scale, 600g	\$169
GM-3KG	Digital Scale, 3000g	\$169
AP-9VA-110V	AC Adapter	\$25

## BENCH SCALE, 100KG

- Heavy duty bench platform scale, separate indicator
- LED display, load cell transducer
- Platform size: 450 mm x 340 mm
- 100 kg x 0.05 kg, 220 lb 0.1 lb
- 6 x 1.5V UM-3 batteries or AC adapter with 1A output



MODEL	DESCRIPTION	PRICE
GB-100KG	Bench Scale, 100kg	\$595
AP-9VA-110V	AC Adapter	\$25

## ELECTRONIC SCALE, 5000G

- 5000g measuring capacity with 1g resolution
- Dual range, gram or ounces, selected by internal slide switch
- Single push button control on front panel
- Battery or 9VDC adapter power supply
- Stainless steel platform
- RS232 serial interface



MODEL	DESCRIPTION	PRICE
GM5000	Electronic Scale, 5000g	\$359
AP-9VA-110V	AC Adapter	\$25

## CARRYING CASES



CA-52A



C-820



CA-05A



MC-2



CA-833R



R9999



R8888

MODEL	DESCRIPTION	PRICE
CA-52A	Soft Carrying Case, 7"L x 3"W x 2"D	\$15
C-820	Soft Carrying Case, 8"L x 5"W x 2"D	\$18
CA-05A	Soft Carrying Case, 9"L x 4"W x 2"D	\$19
C-833R	Multi-tool Carrying Case, 11"L x 9"W x 2"D	\$22
MC-2	Attache-style Carrying Case, 17"L x 14"W x 5"D	\$39
R8888	Deluxe Carrying Case, 13"L x 12"W x 5.8"D	\$69
R9999	Industrial Tool Bag, 15.8"L x 7.8"W x 11.8"D	\$49

## ACCESSORIES



SD-2GB



SD-MINI



BS-6

MODEL	DESCRIPTION	PRICE
SD-2GB	2GB SD Memory Card	\$29
SD-MINI(8GB)	8GB Micro SD Memory Card	\$28
BS-6	Tripod	\$69

# REFERENCE GUIDE

## ELECTRICAL

**Electrical Safety Standards** - To ensure the safe operation of electrical instruments, the IEC61010 has established safety standards for electrical environments. There are four categories, which are always stated with the designated voltage, for example "CAT III, 150 V" or "CAT IV, 1000 V".

**CAT I** - Applicable to instruments and equipment, which are not intended to be connected to the mains supply. Examples: low voltage electronic circuits, load circuits of bench power supplies, etc.

**CAT II** - Defines circuits which are intended for direct connection into mains sockets or similar points. Example: a device connected to a 120 V mains socket.

**CAT III** - For circuits which can be connected to the mains installation of a building. Example: 120/240 V distribution boards, busbars, or equipment permanently connected to the 3-phase power supply (e.g. electric motors).

**CAT IV** - Includes circuits which are connected directly to the source of power for a given building. There are very high levels of available energy and arc flash can occur. Example: measurements on a cable connecting the power transformer and a building (i.e. before the circuit breakers in the building).

**True Root Mean Square (TRMS)** - When measuring the value of an alternating current signal it is often necessary to convert the signal into a direct current signal of equivalent value (known as the root mean square, RMS value). This process can be quite complex and most low-cost instrumentation and signal converters carry out this conversion by filtering the signal into an average rectified value and applying a correction factor.

**Volt** - The unit by which an electromotive force or voltage is measured. The volt is a measure of electric potential. Electrical potential is a type of potential energy, and refers to the energy that could be released if electric current is allowed to flow.

**Ampere (Amp)** - Amperage or Amps provided by an electrical service is the flow rate of "electrical current" that is available.

**Ohm** - The unit of measurement for resistance. One ohm is that resistance that limits the current to one ampere when a potential of one volt exist across its terminals.

**Watt** - The unit of measurement for power. One watt equals to the work done when one joule is used per second.

**Capacitance** - The ability of two conductors separated by an insulator to store an electrical charge.

## TEMPERATURE, HUMIDITY AND MOISTURE

**Distance to Spot** - The field of view of an infrared thermometer is similar to that of a flashlight, the further the object is from the flashlight, the bigger the diameter of the beam. The further you are from your target, the larger the area of measurement spot. Optical resolution is defined by the ratio between the distance from the object being measured to the size of the object being measured (D:S). The greater the D:S ratio, the higher the optical resolution. A thermometer with a higher resolution allows you to measure smaller objects from greater distances.

**Emissivity** - Term used to express the effectiveness of a given material in emitting energy as thermal radiation.

**Relative Humidity** - Relative humidity is the amount of moisture in the air compared to what the air can "hold" at that temperature. When the air can't "hold" all the moisture, then it condenses as dew.

**Dry-Bulb Temperature (DBT)** - The dry-bulb temperature is the temperature of air measured by a thermometer freely exposed to the air but shielded from radiation and moisture. DBT is the temperature that is usually thought of as air temperature.

**Wet-Bulb Temperature (WBT)** - The wet-bulb temperature is the temperature a parcel of air would have if it were cooled to saturation (100% relative humidity) by the evaporation of water into it.

**Thermocouples (T/C)** - A temperature-measuring device consisting of two dissimilar conductors that contact each other at one or more spots, where a temperature differential is experienced by the different conductors (or semiconductors). It produces a voltage when the temperature of one of the spots differs from the reference temperature at other parts of the circuit.

**Heat index (HI)** - An index that combines air temperature and relative humidity in an attempt to determine the human-perceived equivalent temperature—how hot it feels.

**WBGT** - The wet-bulb globe temperature (WBGT) is a composite temperature used to estimate the effect of temperature, humidity, wind speed (wind chill), and visible and infrared radiation (usually sunlight) on humans.

## REFERENCE GUIDE

**Data Logger** - An electronic device that is capable of recording data over time or in relation to location either built in to the instrument or sensor or via external instruments and sensors.

**Moisture Content** - Moisture content is the quantity of water contained in a material.

### INDUSTRIAL

**Stroboscope** - Also known as a strobe, it is used to make a cyclically moving object appear to be slow-moving, or stationary. It consists of either a rotating disk with slots or holes or a lamp such as a flashtube which produces brief repetitive flashes of light. When a rotating or vibrating object is observed with the stroboscope at its vibration frequency (or a submultiple of it), it appears stationary.

**Tachometer** - An instrument measuring the rotation speed of a shaft or disk, as in a motor or other machine. The device usually displays the revolutions per minute (RPM).

**Durometer** - One of several measures of the hardness of a material. Hardness may be defined as a material's resistance to permanent indentation.

**Refractometer** - A refractometer is a laboratory or field device for the measurement of an index of refraction (refractometry).

**Anemometer** - An anemometer or windmeter is a device used for measuring wind speed.

**Lux (LX)** - The unit of illuminance and luminous emittance, measuring luminous flux per unit area. It is equal to one lumen per square metre.

**Foot-candle (FC)** - A unit of measure of the intensity of light falling on a surface equal to 1 lumen per square foot.

### GAS

**Carbon Monoxide (CO)** - is a colorless, odorless, and tasteless gas that is slightly less dense than air. It is toxic to humans when encountered in concentrations above about 35 ppm.

**Indoor Air Quality (IAQ)** - is a term which refers to the air quality within and around buildings and structures, especially as it relates to the health and comfort of building occupants. IAQ can be affected by gases (including carbon monoxide), microbial contaminants (mold, bacteria), or any mass or energy stressor that can induce adverse health conditions.

**Lower explosive limit (LEL)** - The lowest concentration (percentage) of a gas or a vapor in air capable of producing a flash of fire in presence of an ignition source (arc, flame, heat).

**Parts per million (PPM)** - Just as per cent means out of a hundred, so parts per million or ppm means out of a million. Usually describes the concentration of something in water or soil.

### WATER QUALITY

**pH** - Is the negative log of the activity of the hydrogen ion in an aqueous solution. Solutions with a pH less than 7 are said to be acidic and solutions with a pH greater than 7 are basic or alkaline. Pure water has a pH of 7.

**Oxygen Reduction Potential (ORP)** - ORP stands for oxidation-reduction potential, which is a measure, in millivolts, of the tendency of a chemical substance to oxidize or reduce another chemical substance. OXIDATION.

**Oxidation** - Oxidation is the loss of electrons or an increase in oxidation state by a molecule, atom, or ion.

**Reduction** - Reduction is the gain of electrons or a decrease in oxidation state by a molecule, atom, or ion.

**Total Dissolved Solids (TDS)** - Total Dissolved Solids is directly related to the purity of water. It is the measurement for the combined content of all inorganic and organic substances in a given volume of water, expressed in units of mg per unit volume of water (mg/L) or parts per million (ppm).

**Dissolved Oxygen (DO)** - Dissolved oxygen refers to the level of free, non-compound oxygen present in water or other liquids.

**Salinity** - Salinity is the saltiness or dissolved salt content of a body of water.

**Automatic Temperature Compensation (ATC)** - Automatic correction for the influence of temperature at the measurement source.



## CATEGORY INDEX

AC Leakage Current Tester .....	6
Air Quality Meters.....	46
Air Velocity / Anemometers .....	36-39
Caliper .....	56
Carbon Monoxide Meter .....	47
Carrying Cases .....	58
Clamp Meters.....	4-5
Coating Thickness Testers.....	31
Conductivity/TDS/Salinity Meter .....	54
Decade Boxes.....	8
Durometer .....	32
Earth Resistance Tester.....	5
Electrical Test Kits .....	11-12
EMF Meters.....	49
Environmental Meters .....	42
Force Gauges .....	33
Gas Detectors .....	47
Hardness Tester .....	32
Heat Index Stopwatches .....	56
Heat Stress WBGT Meters .....	43
Insulation Testers.....	6
Laser Distance Measurers .....	50-51
LCR Meter .....	8
Leak Detectors.....	48-49
Light Meters .....	41-42
Loop Calibrator.....	10
Manometer .....	39-40
Micrometer .....	56
Milliohm Meters.....	8
Moisture Meters.....	30
Multimeter Accessories .....	13-14
Multimeters .....	1-3

## CATEGORY INDEX

Outlet Circuit Tester .....	15
pH/ORP Meter .....	54
Phase & Motor Rotation Tester .....	7
Psychrometers, Dew Point/Wet Bulb .....	30
Radiation Meter .....	49
Refractometers: Sucrose, Salinity, Battery Coolant .....	55
Scale .....	57
Sound Level Meters / Calibrator .....	44-45
Stopwatches .....	56
Stroboscope .....	35
Stud/Metal Detector .....	50
Tachometers - Contact & Photo .....	34-35
Temperature & Humidity Dataloggers .....	29
Temperature Indicators .....	23
Temperature Probes, Thermocouples .....	25
Temperature Test Kits .....	22-27
Test Leads and Accessories .....	13-14, 58
Thermometers, Thermocouple / RTD .....	23-24
Thermal Imagers .....	18-21
Thermocouple Calibrators / Temperature Simulator .....	26
Thermo-Hygrometers .....	28
Thermometers, Infrared .....	16-17
Torque Meter .....	36
Ultrasonic Thickness Tester .....	32
Vibration Meter .....	36
Video Inspection Cameras .....	52-53
Voltage & Current Calibrators / Simulator .....	9-10
Voltage & Current Dataloggers .....	7
Voltage Detector .....	15
Watt Meter .....	7

## PRODUCT INDEX

8230.....	39	FS-200 .....	17
8689.....	54	GB-100KG.....	57
8706.....	30	GD-3300.....	47
8778.....	43	GM3KG.....	57
8818.....	29	GM-5000.....	57
8829.....	29	GM600G.....	57
8906.....	37	GS400.....	48
9801.....	29	GS-S800.....	48
77535.....	46	GU-3001.....	49
82100.....	40	HT-6510A.....	32
87P6.....	30	K4010.....	35
AC-006.....	14	K4020.....	35
AD-1.....	14	K4030.....	35
AP-9VA-110V.....	24	K5090.....	8
AT-6.....	34	K5090-230V.....	8
BS-150.....	52	LA1010.....	50
BX-500.....	26	LM-8000.....	42
C-322.....	45	LM-81AM.....	36
C-370.....	23	LM-81HT.....	28
C-380.....	48	LM-81LX.....	41
C-383.....	47	LS-103.....	25
C-820.....	58	LS-104.....	25
C-833R.....	58	LS-107.....	25
CA-05A.....	58	LS-109.....	25
CA-203.....	3	LS-134A.....	25
CA-52A.....	58	LS-139.....	25
CBOX-406.....	8	LS-181.....	25
CF-734760.....	13	LS-182.....	25
CM-8822.....	31	MC-2.....	58
CM-9930.....	5	MS2301.....	5
CO-180.....	47	P-15.....	13
CP-09.....	3	R-11.....	21
DC-515.....	56	R2000.....	23
DC-516.....	56	R2001.....	16
DM-01.....	50	R2002.....	16
DT-1236L.....	34	R2005.....	16
DW-6060.....	7	R2020.....	17
EMF-822A.....	49	R2050.....	19
FC-105.....	13	R2050-3.4V.....	19
FC-105A.....	13	R2100.....	21
FC-108.....	13	R2100-7.4V.....	21
FC-108G.....	14	R2100-KIT.....	22
FC-170A.....	13	R2222.....	23
FC-178A.....	13	R2500.....	25
FC-300.....	13	R2501.....	25
FC-300-0.2A/250V.....	13	R2502.....	25
FC-A15.....	13	R2503.....	25
FC-A18.....	13	R2504.....	25
FC-A23.....	13	R2505.....	26
FC-A23G.....	14	R3001.....	39
FS-1001.....	33	R3002.....	39

## PRODUCT INDEX

R5001.....	8	SD-3007.....	28
R5002.....	6	SD-4023.....	45
R5003.....	7	SD-4207.....	37
R5004.....	7	SD-4214.....	38
R5005.....	3	SD-4307.....	54
R5006.....	1	SD-6020.....	33
R5007.....	2	SD-6100.....	33
R5008.....	2	SD-8205.....	36
R5010.....	1	SD-9300.....	42
R5020.....	4	SD-947.....	24
R5030.....	4	SD-947DELUXE.....	24
R5040.....	4	SD-9901.....	46
R5050.....	5	SL-4022.....	44
R5100.....	15	ST-118.....	1
R5200.....	15	ST-123.....	30
R5900.....	2	ST-123-P.....	30
R6001.....	28	ST-129.....	30
R6010.....	30	ST-129-P.....	30
R6020.....	29	ST-1301.....	41
R6030.....	29	ST-156.....	31
R8001.....	51	ST-2G.....	48
R8002.....	51	ST-5500.....	6
R8008.....	49	ST-610B.....	24
R8050.....	44	ST-610BDELUXE.....	24
R8100.....	52	ST-6236B.....	34
R8800.....	9	ST-8839.....	17
R8801.....	9	ST-9809.....	6
R8802.....	26	ST-ELECTRICKIT.....	11
R8888.....	58	ST-ELECTRICKIT2.....	11
R9000.....	53	ST-HVACKIT.....	12
R9030.....	32	ST-HVACKIT.....	27
R9500.....	55	ST-INDUSKIT.....	12
R9600.....	55	ST-MULTIKIT.....	11
R9700.....	55	ST-TEMPKIT.....	27
R9999.....	58	SW600.....	56
RBOX-408.....	8	SW700.....	56
REED-BUILDING-KIT.....	22	SW-U801-WIN.....	24
REED-ELECTRICAL-KIT.....	12	TL-2150/S.....	29
REED-HVAC-KIT.....	22	TL-88-1.....	13
REED-MECHANICAL-KIT.....	40	TL-88-A15.....	13
RHA-33.....	28	TM-8811.....	32
RHA-33.....	30	TP-O1.....	25
RHA-75.....	28	TP-R01.....	23
RHA-75.....	30	TQ-8800.....	36
RL-22.....	21	USB-14.....	24
RL-33.....	21	VCO1.....	26
SC-05.....	45	VCO4.....	10
SD-1128.....	42	VCO5.....	10
SD-2010.....	43	YK-10LX.....	41
SD-230.....	54	YK-80AM.....	37
SD-2GB.....	24	YK-80AS.....	38

AMETEK	OAKTON INSTRUMENTS
ASHCROFT	OMEGASONICS
BACHARACH	PCWI
BYK	PTC INSTRUMENTS
CHATILLON	QUEST TECHNOLOGIES
DAKOTA ULTRASONICS	RAYTEK
DEFELSKO	REED
DELMHORST INSTRUMENTS	REX DUROMETERS
DICKSON DWYER	RHOPOINT
ELCOMETER	ROSEMOUNT
ENERAC	SHIMPO
EXTECH	SIKA
FLUKE	SPECTRONICS
FUJI ELECTRIC	STARRETT
GARDCO	TES
GREENLEE	TESTO
HANNA INSTRUMENTS	TIME ELECTRONICS
HONEYWELL	TPI
IMADA	TQC
INSTEK	VAISALA
KOBOLD	WATLOW
MAGNAFLUX	WIKA
MITUTOYO	YOKOGAWA
MONARCH INSTRUMENTS	YSI
MSA	



Calibration Technologies Ltd.  
50 Steeles Ave. E., Unit 10  
Milton, ON. L9T 4W9  
Canada

**1-888-608-3113**

ISO Registered